



**Introducing
The HDL Eco Solution**

Contents

- 1 What is HDL Eco solution?
- 2 What can we benefit from Eco solutions
Installation and Maintenance
Save Cost
Other Features
- 3 Product Portfolio

What is HDL Eco solution?

To address the sore points of the traditional wiring method, such as high wiring costs and long commission period, HDL has developed a full range of flush-mounted controllers and power interfaces for the market. Due to the installation methods, the system can be easily installed to reduce costs in time and human power, and save plenty of wiring materials. Meanwhile, the solution also ensures flexibility and the ability to customize. That's why we name it Eco solution.

**What can we benefit
from an Eco solution ?**

These are some pain points of the standard wired solution we keep encountering.

- A large number of DB installed devices. Larger DB, and space are required for installation.
- Complicated wiring method.
- High wire and pipe cost and labor cost.
- Lack of flexibility. Unable to be extended and adapted to new needs if the DB is full.



HDL Eco Solution

Installation
and
Maintenance

Save Cost

Other
Features

Installation and Maintenance

Easy to install

There are two kinds of products with different wiring methods in eco solutions, both of which are easy and cost-effective. You are free to choose the different installation methods according to the actual situation.



Flush-mounted Controller



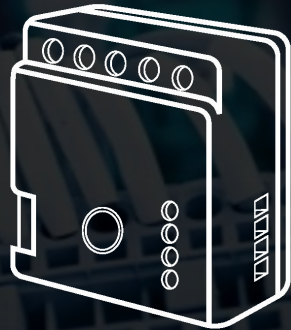
Power Interface

Flush-mounted Controller

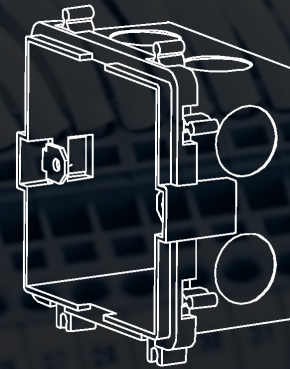
The controllers can be installed in the wall and ceiling with 86 wall boxes so as to simplify the wiring.



Panel switch
(Dry contact type)

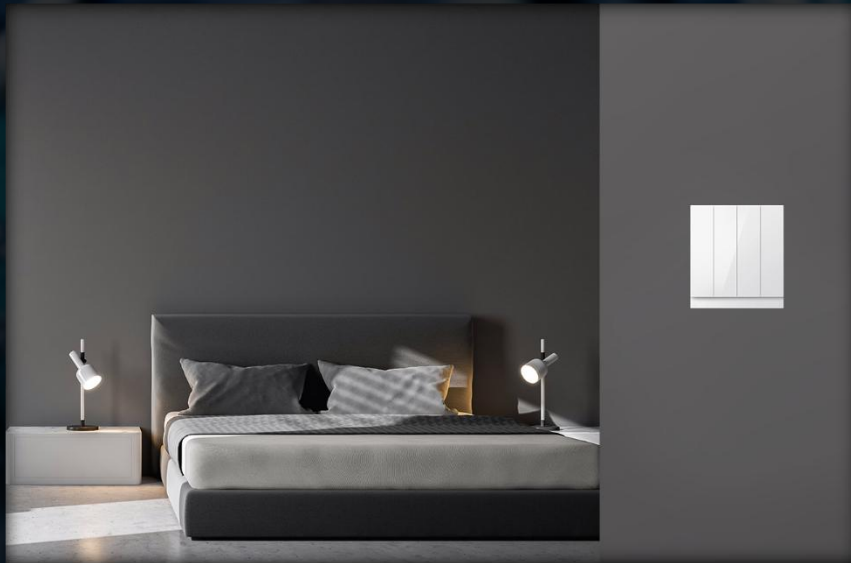


Relay module



Wall box

With the flush-mounted controllers, you can choose HDL non-smart control panels or integrate any third-party control panels(dry contact type) in the projects.



**Third-party control panels
(dry contact type)**



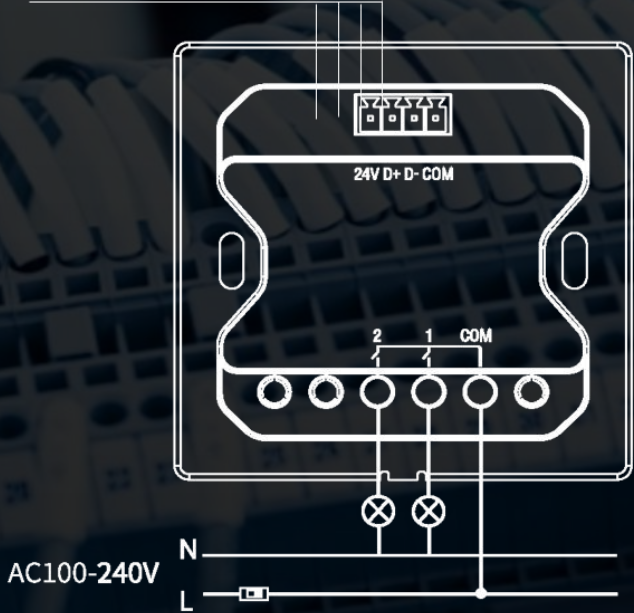
HDL non-smart control panels

Relay power interface

The power interfaces with dry contact can be easily matched with various types of control panels, including touch display and push-button panels.



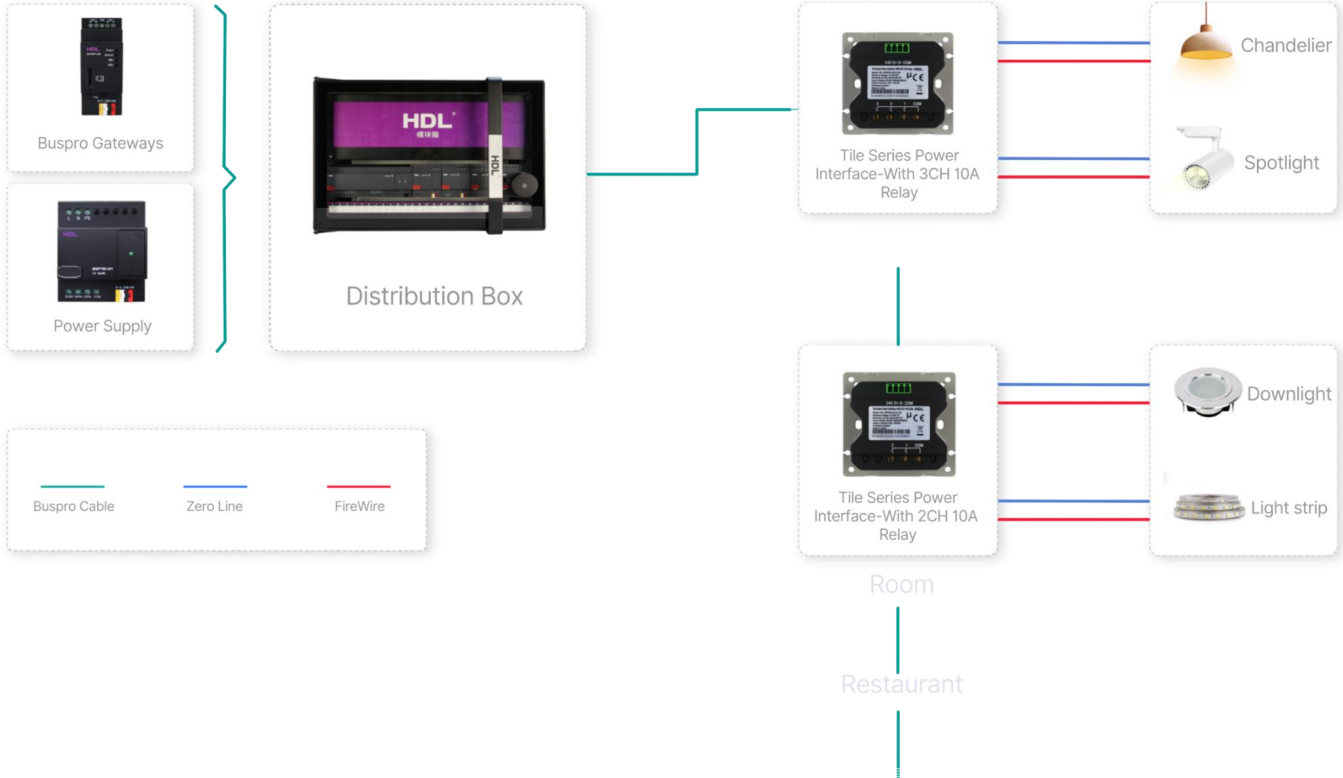
Buspro Cable



Note: It is not suitable for EU wall box

Reduce the design communication

Differing from the standard solutions, the wiring diagram of the Eco solution is much easier to understand as the diagram for strong current. Therefore, the solutions reduce the communication cost between the designers and electricians.



Save Cost

Take an apartment as an example



Reduce the wiring



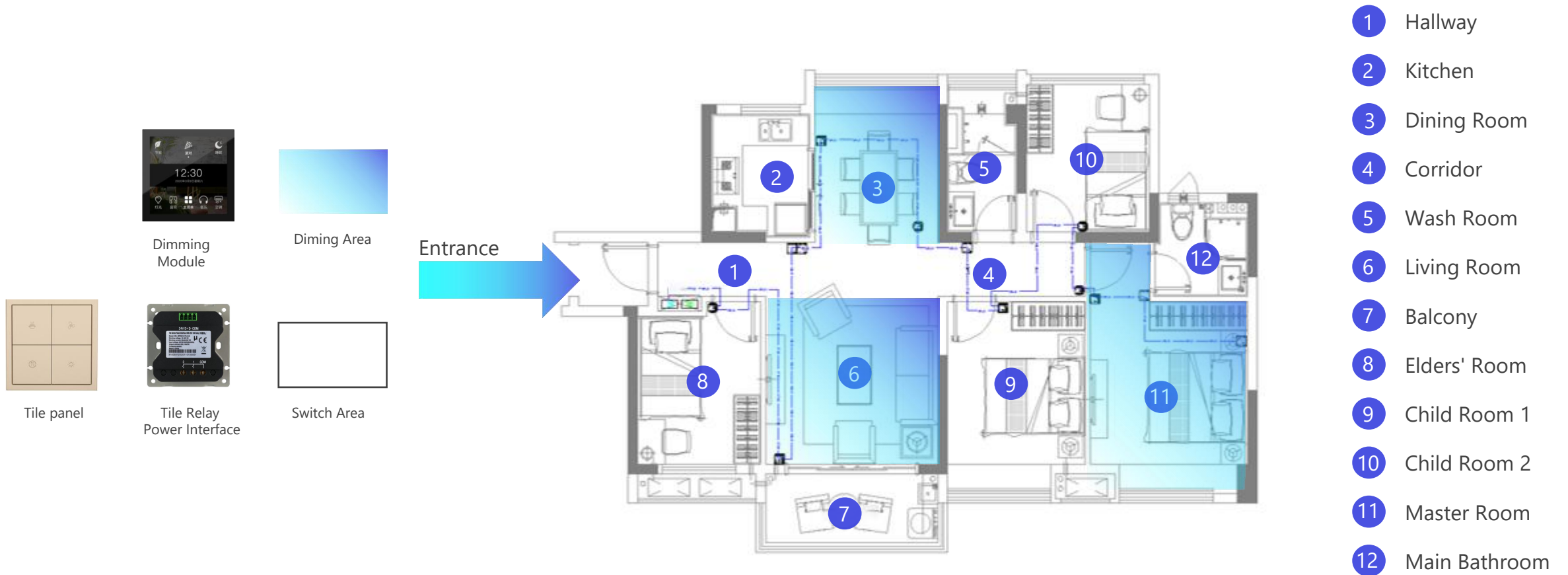
Reduce the time and human cost



Less devices

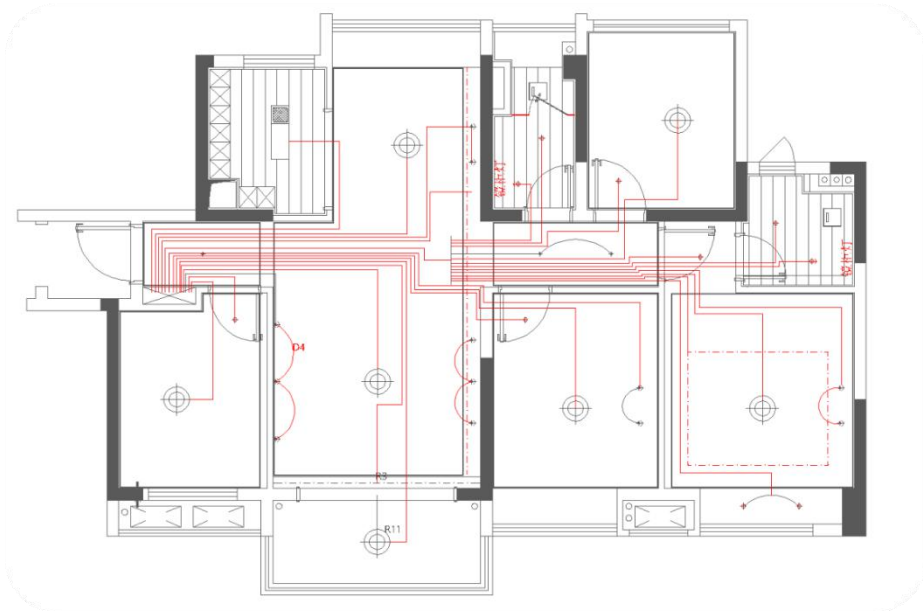
⊖ This is a lighting control solution for a 146 sqm apartment.

The apartment has 4 bedrooms and a living room, and it has 3 dimming areas, and 7 switching areas.



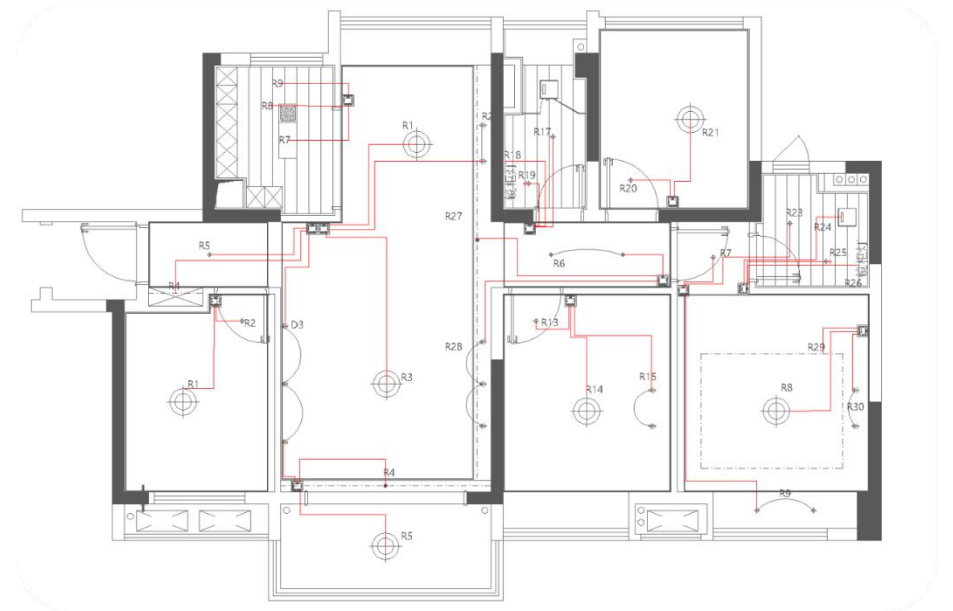
⊖ Reduce wire and pipe cost

According to the floor plan, the wire cost in the Eco solution is 60% less than that in the standard wired solution, so does the pipe.



Buspro

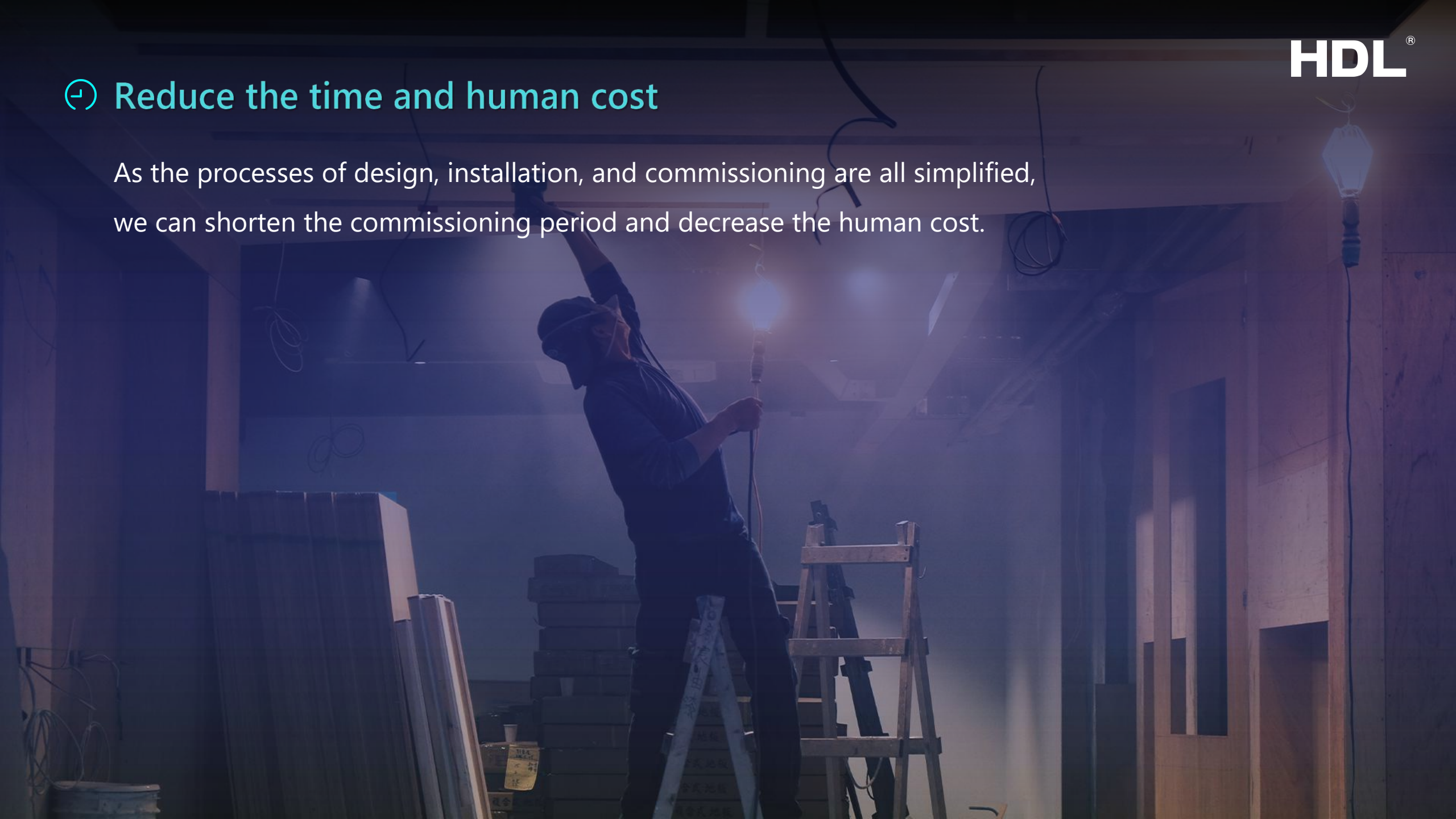
VS



Buspro Eco

↪ Reduce the time and human cost

As the processes of design, installation, and commissioning are all simplified, we can shorten the commissioning period and decrease the human cost.



Reduce equipment and device cost

With the controllers installed in the 86 wall box, you can purchase the relatively cheap control panels (dry contact type) for the system. On the other hand, fewer devices being installed in the distribution box also help reduce its size.



Other features of the Eco Solution

Compatibility and Openness

HDL Eco solution is compatible with third-party systems. The users can integrate other devices for more features.

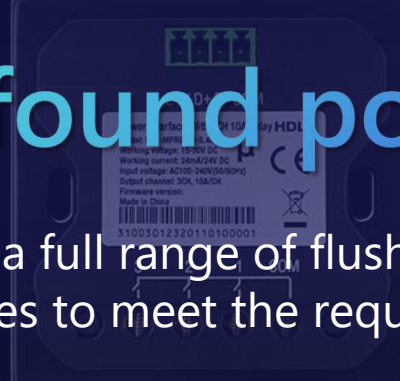
Stability

The eco solution not only is flexible to install and be extended, but also has a stable performance through wired technology.

High extensibility

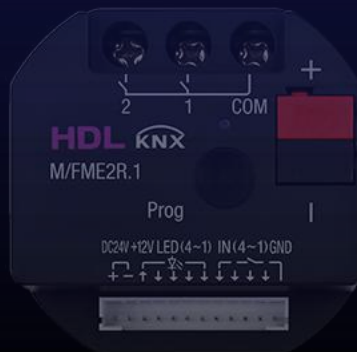
The system is free from the space restrictions of the distribution box. Therefore, it's easy to extend the devices in case of extra demand.





Well-found portfolio

HDL has developed a full range of flush-mounted controllers and power interfaces to meet the requirements of projects.



Product Portfolio

Distributed System Modules & Panel Power Interfaces

Flush Mounted Actuators

HDL offers the actuators that run on Buspro or KNX system, which can be categorized into relays and dimmers.



1CH 1A Flush-mounted Dimming Actuator (EU)



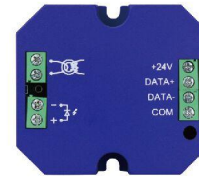
3CH 10A Flush-mounted Switching Actuator



1CH 16A Flush-mounted Switching Actuator (EU)



2CH 10A Flush-mounted Switching Actuator (EU)



IR Transmitter with Current Detection



4 CH IR Emitter with Current Detection



4 CH Dry Contact Module



8 CH Dry Contact Module



1CH 1A Flush-mounted Dimming Actuator (EU)



3CH 10A Flush-mounted Switching Actuator



1CH 16A Flush-mounted Switching Actuator (EU)



2CH 10A Flush-mounted Switching Actuator (EU)



Infrared Emitter



4-Zone Dry Contact Module



8-Zone Dry Contact Module

Power Interfaces

There are 8 power interfaces suitable for various types of panels. They are divided into Tile series and regular models.

The Tile Series Power Interface can be matched with the Tile series panels, while the regular with HDL iTouch panels, Granite panels and others. The power interfaces with relays/dimmer also help directly control the targets.

HDL® | buspro



Power Interface-With
2CH 10A Relay



Power Interface-With
3CH 10A Relay



Tile Series Power Interface-With
2CH 10A Relay



Tile Series Power Interface-With
3CH 10A Relay

HDL® | KNX®



Power Interface-With
2CH 10A Relay



Power Interface-With
3CH 10A Relay



Tile Series Power Interface-With
2CH 10A Relay



Tile Series Power Interface-With
3CH 10A Relay