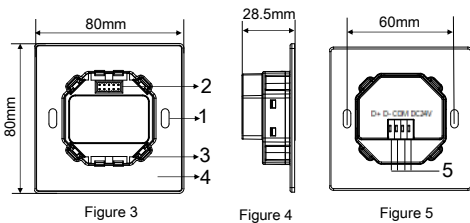




Figure 1. Panel Power Interface EU

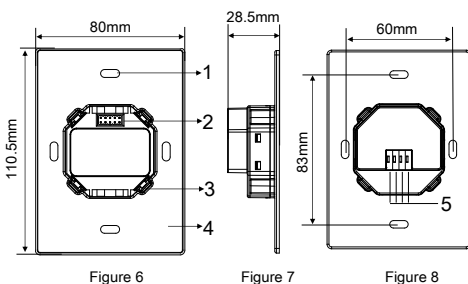


Figure 2. Panel Power Interface US



HDL-MPLPI.48-A (EU)

Figure 3 - 5. Dimensions



HDL-MPLPI.46-A (US)

Figure 6 - 8. Dimensions

Overview

Panel Power Interface EU/US (See Figure 1-2) provides DC power and communicates with panel switch, and supports different EU/US types of panels and sensors.

Functions

- Provides DC power and communicates with panel switch and sensor
- HDL Buspro interface supported (CAT5E or dedicated HDL Buspro cable required)

Important Notes

- The panel power interface should be installed in the wall box.
- Buspro cable - CAT5E or dedicated HDL Buspro cable.
- It is recommended to connect wires in hand-in-hand.
- The power interface should work in conjunction with panel and sensor.

Product Information

Dimensions - See Figure 3 - 8

1. **Screw hole:** to fix the panel power interface into the wall box.
2. **Communication interface:** to connect to panel switch or sensor.
3. **Mounting slot:** to connect to panel switch or sensor.
4. **Plate**
5. **HDL Buspro interface**

Product installation and disassembly

(Take HDL-MPLPI.48-A as an example)

Installation - See Figure 9

- Step 1. Install the wall box in the wall.
- Step 2. Fix the power interface onto the wall box with screws.
- Step 3. Hold the edge of the panel, and insert the panel in the slots of power interface vertically.

Disassembly - See Figure 10

- Step 1. Insert the panel gap with a slotted screwdriver.
- Step 2. Pry up the panel gently and hold the edge of the panel. Then the panel can be taken off.
- Step 3. Unscrew the screws with a screwdriver, then the power interface module can be disassembled from the wall box.

Safety Precautions

- The installation and commissioning of the device must be carried out by HDL or the organization designated by HDL. For planning and construction of electric installations, the relevant guidelines, regulations and standards of the respective country are to be considered.
- The device should be installed in wall box. HDL does not take responsibility for all the consequences caused by installation and wire connection that are not in accordance with this document.
- Please do not privately disassemble the device or change components, otherwise it may cause mechanical failure, electric shock, fire or body injury.
- Please resort to our customer service department or designated agencies for maintenance service. The warranty is not applicable for the product fault caused by private disassembly.

Package Contents

HDL-MPLPI.48/46-A*1 / Buspro connector*1 / Screw(M4*28mm)*2 / Screw(M4*50mm)*2 / Datasheet*1

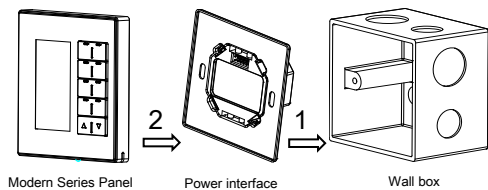


Figure 9. Installation

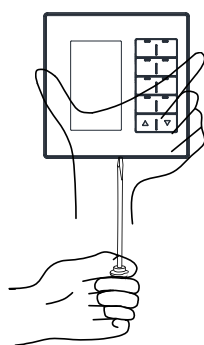


Figure 10. Disassembly

Technical Data

Basic Parameters

Working voltage	12~30V DC
Communication	HDL Buspro

External Environment

Working temperature	-5°C~45°C
Working relative humidity	≤90%
Storage temperature	-20°C~60°C
Storage relative humidity	≤93%

Specifications

Dimensions	80×80×28.5 (mm) (EU) 80×110.5×28.5(mm) (US)
Net weight	EU: 58g US: 77g
Housing material	Steel, ABS
Installation	Wall box (See Figure 9)
Protection rating (Compliant with EN 60529)	IP20

Name and Content of Hazardous Substances in Products

Components	Hazardous substances					
	Lead (Pb)	Mercury (Hg)	Cadmium (Cd)	Chromium VI (Cr (VI))	Poly-brominated biphenyls (PBB)	Poly-brominated diphenyl ethers (PBDE)
Plastic	o	o	o	o	o	o
Hardware	o	o	o	o	-	-
Screw	o	o	o	x	-	-
Solder	x	o	o	o	-	-
PCB	x	o	o	o	o	o
IC	o	o	o	o	x	x

The symbol “-” indicates that the hazardous substance is not contained.

The symbol “o” indicates that the content of the hazardous substances in all the homogeneous materials of the component is below the limit requirement specified in the Standard IEC62321-2015.

The symbol “x” indicates that the content of the hazardous substance in at least one of the homogeneous materials of the part exceeds the limit requirement specified in the Standard IEC62321-2015.

HDL Buspro Cable Guide

HDL Buspro	HDL Buspro Cable	CAT5/CAT5E
DATA+	Yellow	Blue/Green
DATA-	White	Blue white/Green white
COM	Black	Brown white/Orange white
24V DC	Red	Brown/Orange

Technical support

E-mail: hdtickets@hdlautomation.com
Website: <https://www.hdlautomation.com>

©Copyright by HDL Automation Co., Ltd. All rights reserved.
Specifications subject to change without notice.