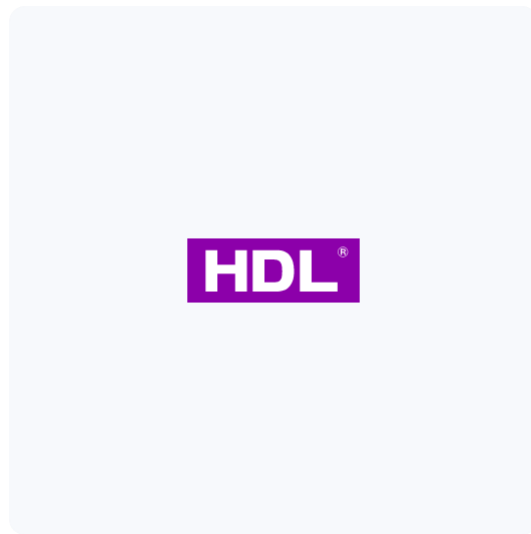




Source 7

Instruction Manual



M GW SIPD -LK .18

Before using this product, please read this manual carefully and keep it properly!

□ □ Overview

Source 7 (hereinafter referred to as the □ product□ or □ device□) is a versatile smart panel with multiple functions. Equipped with a 7-inch capacitive touch screen, this product is suitable for controlling home automation through its interactive interface and knob. Upon proper installation and commissioning, end users can easily and conveniently control various aspects of their home, including lighting, curtains, air conditioners, floor heating, fresh air, music, and scenes.

Note: The pictures and illustrations provided in this instruction manual are for reference purposes only, and the actual product may differ.



APP Download

Key Functions:

1. Compatible with gateway function
2. Knob-operated control, including turn clockwise/counter-clockwise, short press, long press
3. Temperature & humidity monitoring: built-in temperature & humidity sensor for monitoring real-time environment status.
4. Proximity detection: Built-in proximity sensor for detecting human motion. Once the sensor detects near human motion, the touch screen automatically wakes up.
5. It is a MUST to make the device connect with power interface. The optional power interfaces are as below.

Name	Model	Functions
Source_Zigbee Power Interface (hereinafter referred to as "Zigbee interface")	M PW S2R1ETH -ZB.18	<ul style="list-style-type: none">• Power supply for Source 7• 2CH relay output• Network connection through communication interface• Compatible with Zigbee gateway functions
Source_Buspro Power Interface (hereinafter referred to as "Buspro interface")	M PW S2R1ETH -BP.18	<ul style="list-style-type: none">• Power supply for Source 7• 2CH relay output• Network connection through

		communication interface • Compatible with Buspro & Zigbee gateway functions
Source KNX Power Interface (hereinafter referred to as 'KNX interface')	M PW S2R1ETH -KT .18	• Power supply for Source 7 • 2CH relay output

□ □ Appearance

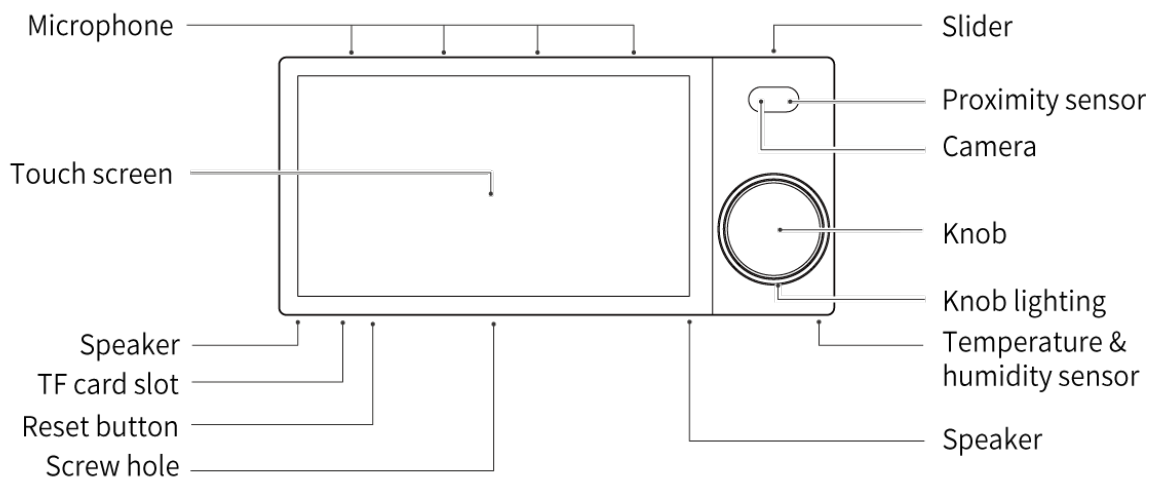


Figure 1

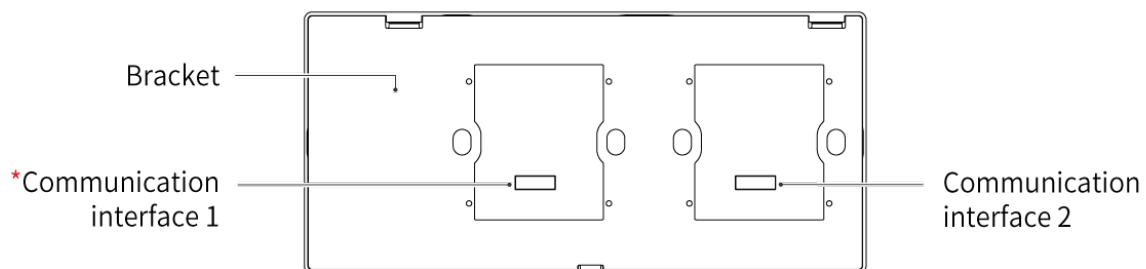


Figure 2

*Note:

- To connect the device with one power interface, please install the power interface in Communication Interface 1.
- To connect the device with two power interfaces, please respectively install them in Communication Interface 1 and 2.
- Please kindly note that only Communication Interface 1 is available for wired network connection. That is to say, to make wired network connection, users should install the power interface in Communication Interface 1, then connect network cable with that power interface.

- The device is available for home wired network connection (applicable for smart home control). Please set it according to actual needs.
- The device also supports Wi-Fi connection. But, to achieve a stable network connection, it recommends using a wired network connection as a priority.

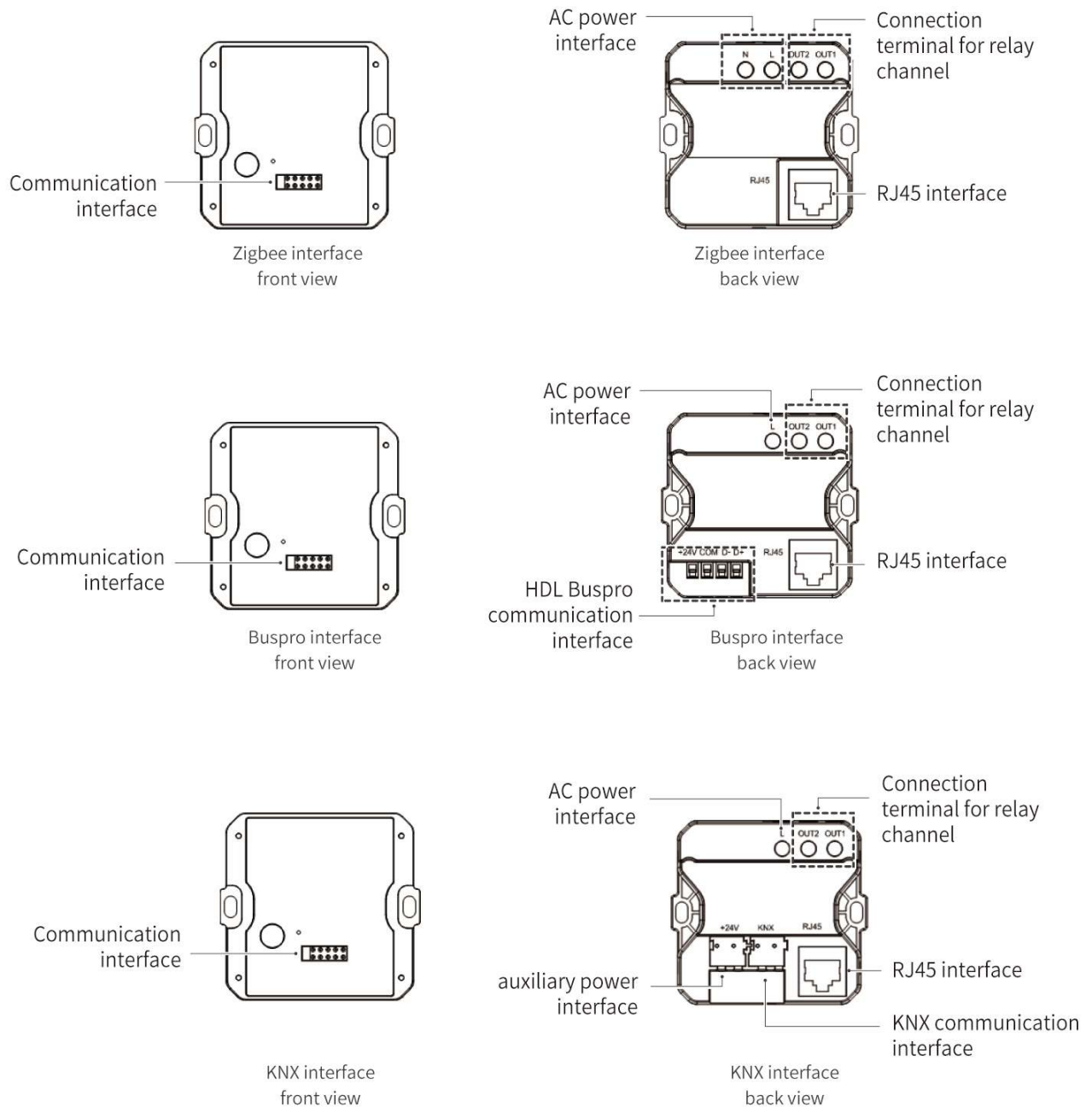


Figure 3

□ □ Technical Data

Power consumption (for Source 7 with power interface)	< 12W
---	-------

Input voltage	Zigbee interface: 100 - 240V AC ,50/60Hz Buspro interface: 18 - 28V DC KNX interface: 21 - 30V DC
KNX auxiliary voltage	18 - 28V DC
Output channel	Zigbee /Buspro /KNX interface: 2CH ,5A/CH Resistive load: □ 660W /CH Capacitive load: □ 200W /CH
Communication protocol	HDL LINK ,W Fi,RJ45
Master chip	PX30
Storage capacity	2+8GB
Operating frequency	2.4GHz ,5GHz
Indoor communication distance (barrier-free)	□ 50m
Operating system	Android
Ethernet interface	RJ45
TF card	Max.64GB
Touch screen	7-inch capacitive touch screen ,available for multi-touch ; Resolution : 1280*720
Knob	Users can turn the knob to adjust the light brightness ,curtain open/close percentage ,media volume ,temperature ,or fan speed . Knob-operated control : turn clockwise/counter-clockwise ,short press ,long press . The knob lighting is with RGB lamp beads .
Camera	5-megapixel camera ,which can be manually blocked or unblocked through the slider .
Microphone	Four microphones are located at the top of the touch screen . The voice detecting range is within 3m around the touch screen .
Speaker	Dual speaker ,0.8W *2
Proximity sensor	Once the sensor detects near human motion , touch screen automatically wakes up . The detecting range is within 15cm around the touch screen .
Temperature & humidity sensor	Real-time monitor environment status
Working temperature	-5□ □ 45□
Working relative humidity	□ 90%RH ,non-condensed

Storage temperature	-20 °C ~ 60 °C
Storage relative humidity	~ 93%RH

□ □ Specifications

Dimensions (W X H X D)	219.2 □ 102 □ 25.6mm (without power interface, see Figure 4) 219.2 □ 102 □ 54.8mm (with power interface)
Net weight	408g (with bracket; without power interface)
Housing material	PC
Installation	Wall box
IP degree (compliant with EN 60529)	IP20
CM III ID	2023AP2281

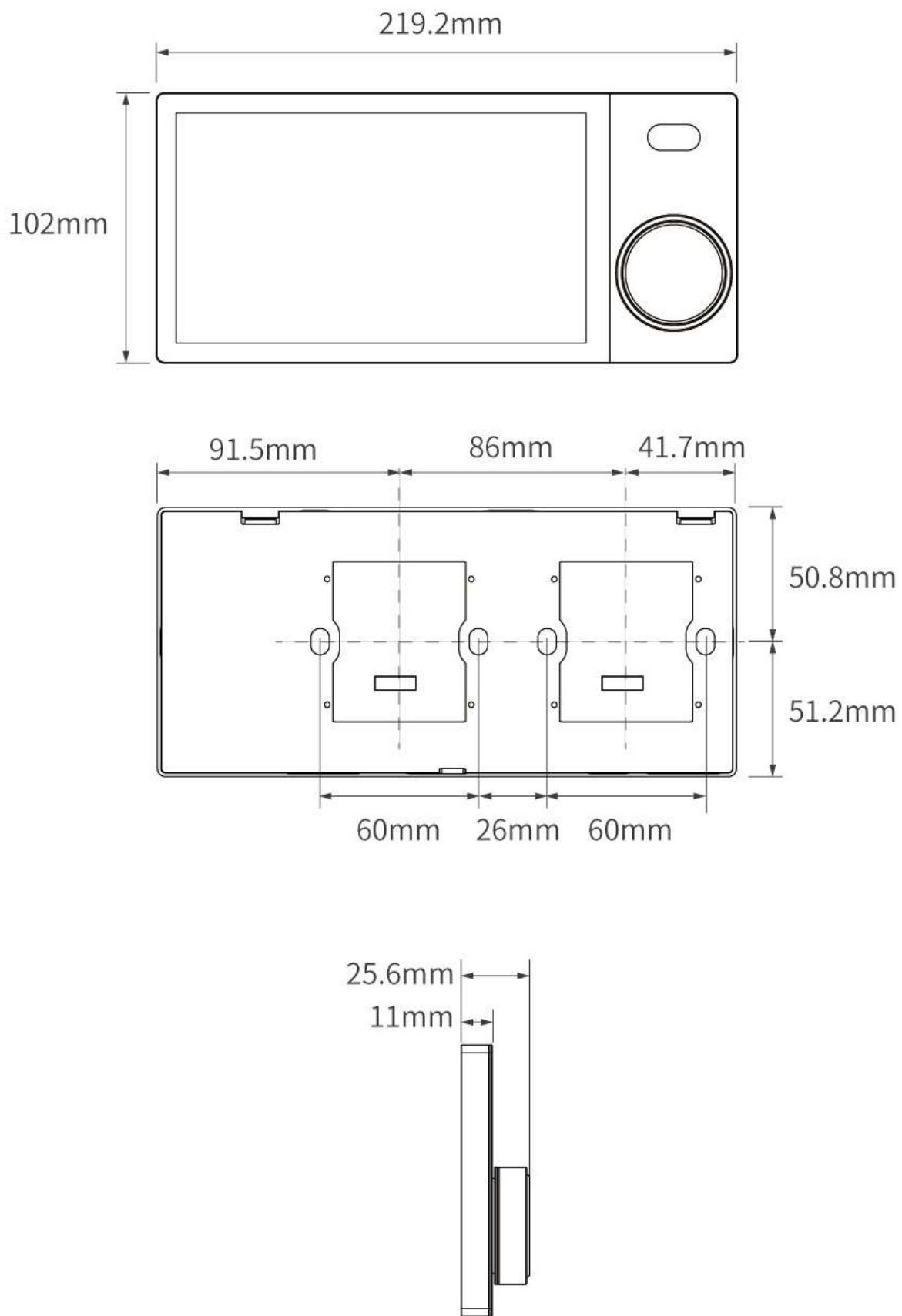


Figure 4

□ □ Safety Precautions

Danger:

Please do not privately disassemble or replace any parts of the product. Otherwise, it may cause mechanical fault, electric shock, fire or personal injuries.

Warning:

- The installation and testing for the product must be carried out by HDL Automation Co., Ltd. (hereinafter referred to as HDL) or its appointed service agencies. The electric construction shall comply with local laws and safety regulations.
- HDL will not be responsible for any consequence caused by the inexperienced or faulty installation and wiring methods, which are not in accordance with the instructions contained in this datasheet.
- Please contact HDL after-sales departments or our designated service agencies for your maintenance service. Product failures caused by private disassembly are not subject to the warranty.

Caution:

- Before performing any installation or disassembly procedures, any maintenance or cleaning procedures on the device, it is crucial to disconnect the device from all voltage sources. This step is necessary to ensure the safety of the technician and prevent any potential damage to the device.
- It is a MUST to install the device with wall box.
- It is a MUST to make the device connect with power interface. The optional power interfaces include Source_Zigbee power interface, Source_Buspro power interface, Source_KNX power interface.

The maximum distance for wireless transmission is 50 meters. To ensure a stable and reliable communication, it is imperative to install the device in an open area, away from large metallic objects.

- Do not use corrosive liquid to wipe the device body, especially the interface, so to avoid damage to the device.
- Do not wipe the device with a damp cloth.
- Prior to performing maintenance or cleaning on the device, disconnect the device from all voltage sources, to avoid electric leakage and electric shock.
- Kindly take note that the installation of the aforementioned device is recommended to be conducted in an indoor environment, with due consideration given to the avoidance of exposure to external factors such as humidity and high temperatures.
- The device is only available for use at an altitude of below 2000 meters.

□ □ Wiring

It is a MUST to make the device connect with power interface. The wiring for the optional power interfaces are as below.

- **Wiring for Zigbee interface**

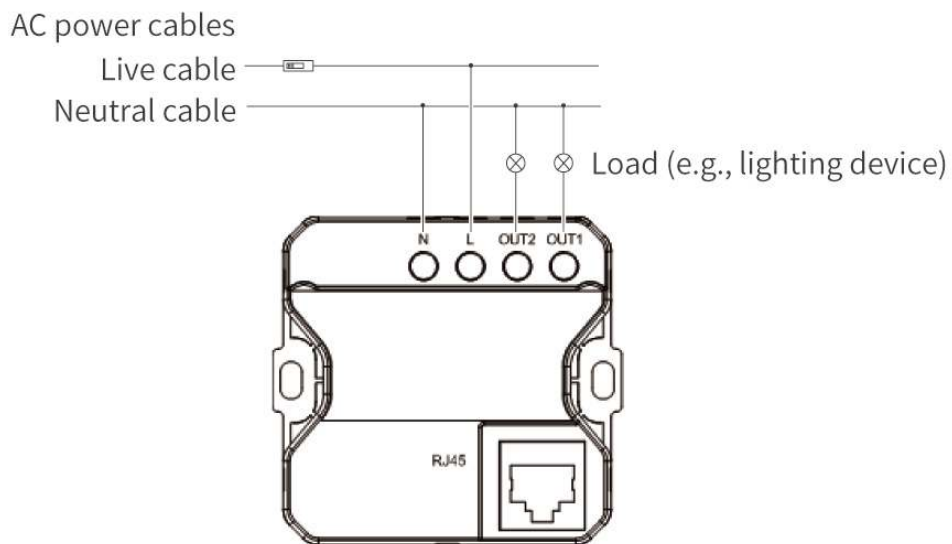


Figure 6

- **Wiring for Buspro interface**

Tips: For Buspro connection, a hand-in-hand connection is recommended.

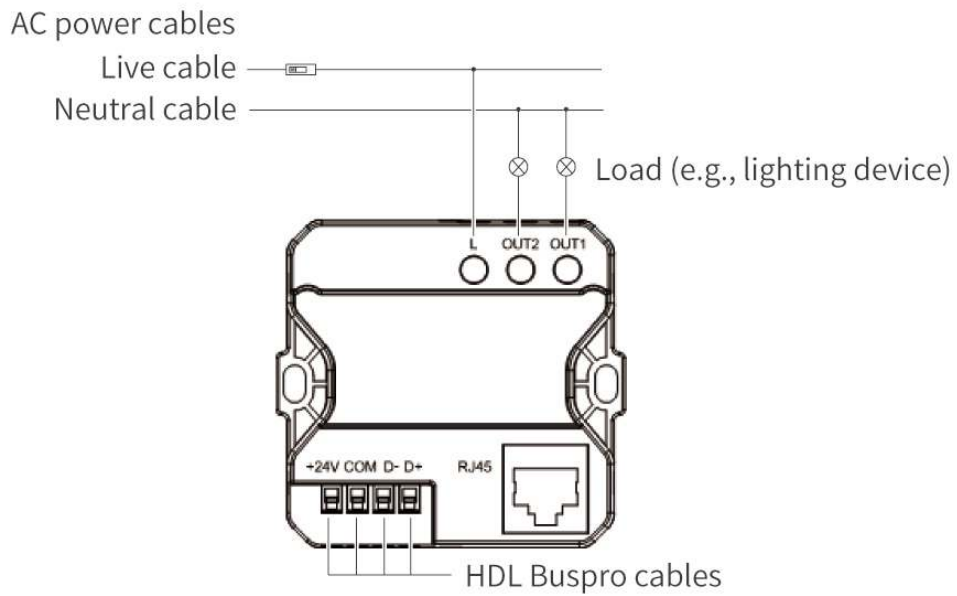


Figure 7

HDL Buspro Cable Guide

HDL Buspro	HDL Buspro Cable	CAT5 /CAT5E
DATA+	Yellow	Blue/Green
DATA-	White	Blue/white/Green/white
COM	Black	Brown/white/Orange/white
24V DC	Red	Brown/Orange

- Wiring for KNX interface

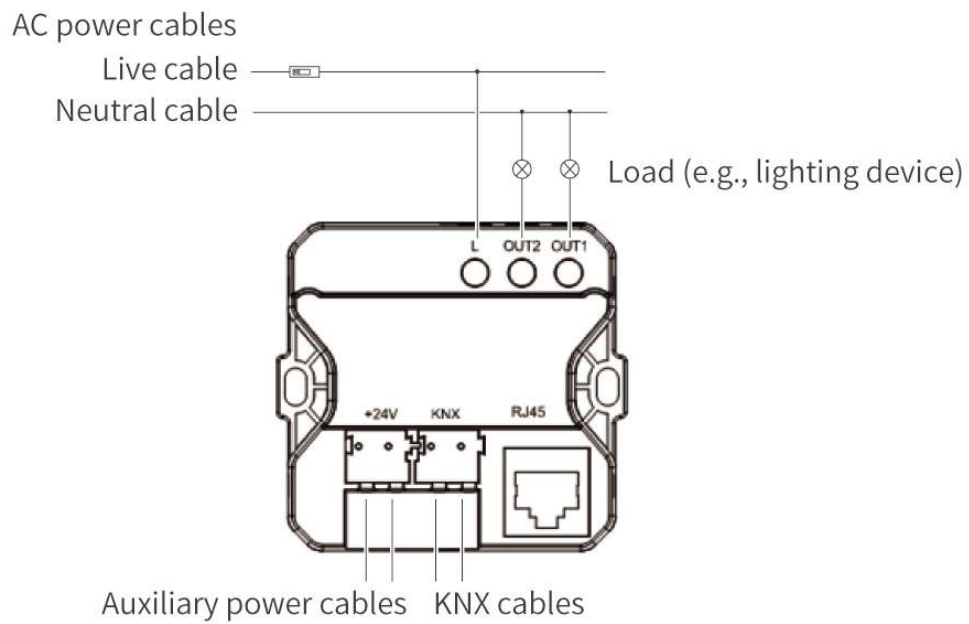


Figure 8

KNX Cable Guide

KNX	KNX Cable
-	Black
+	Red

□ □ Installation

Tips: Before installation, if the panel is still with the bracket, please disassemble it by following the instructions in the section **Disassembly**.

Warning: Before performing any installation procedures on the device, it is crucial to disconnect the device from all voltage sources. This step is necessary to ensure the safety of the technician and prevent any potential damage to the device.

Note:

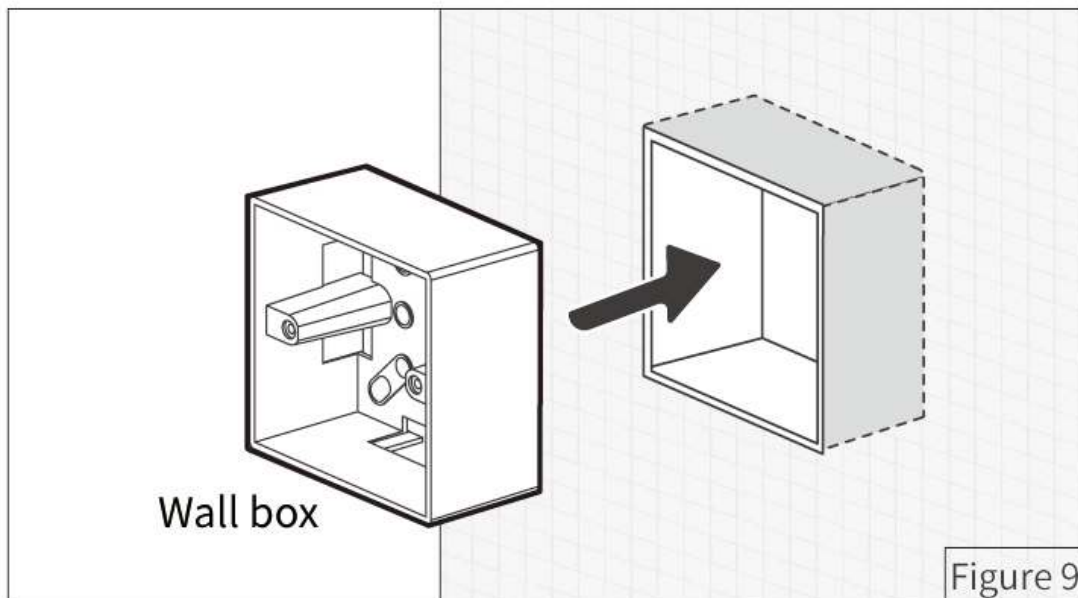
- To equip the device with one power interface, please install the power interface in Sbt1.
- To equip the device with two power interfaces, please respectively install them in Sbt1 and 2.
- Please kindly note that only power interface installed in Sbt1 is available for wired network connection. That is to say, to make a wired network connection, users should install the power interface in

Set 1 at first, then connect network cable with that power interface.

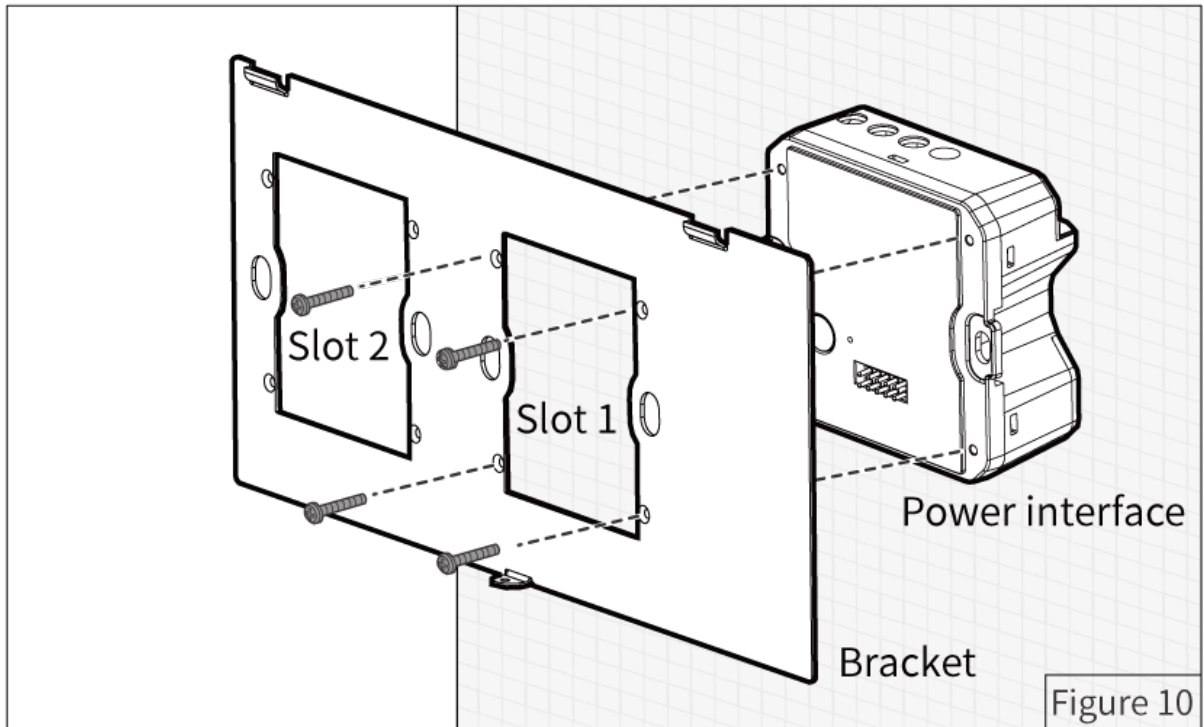
- The device is available for home wired network connection (applicable for smart home control). Please set it according to actual needs.
- The device also supports a Wi-Fi connection. But, to achieve a stable network connection, it recommends using a wired network connection as a priority.

Step 1. Place the wall box into the proper wall body.

Note: Before installation, please get the necessary cables ready in the wall box. Only 86-type wall box is available for installation. The depth of wall box should be $\geq 70\text{mm}$.



Step 2. Fix the bracket onto the power interface with screws.



Step 3. Fix the power interface (already with bracket) into the wall box with screws.

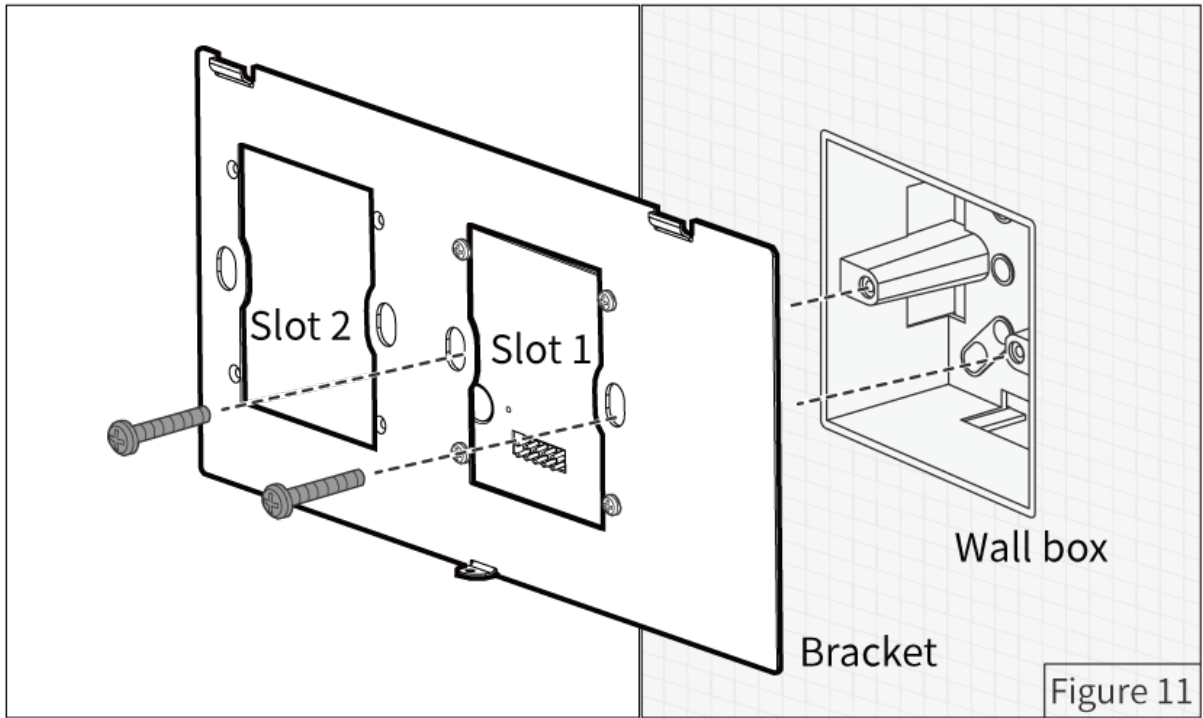
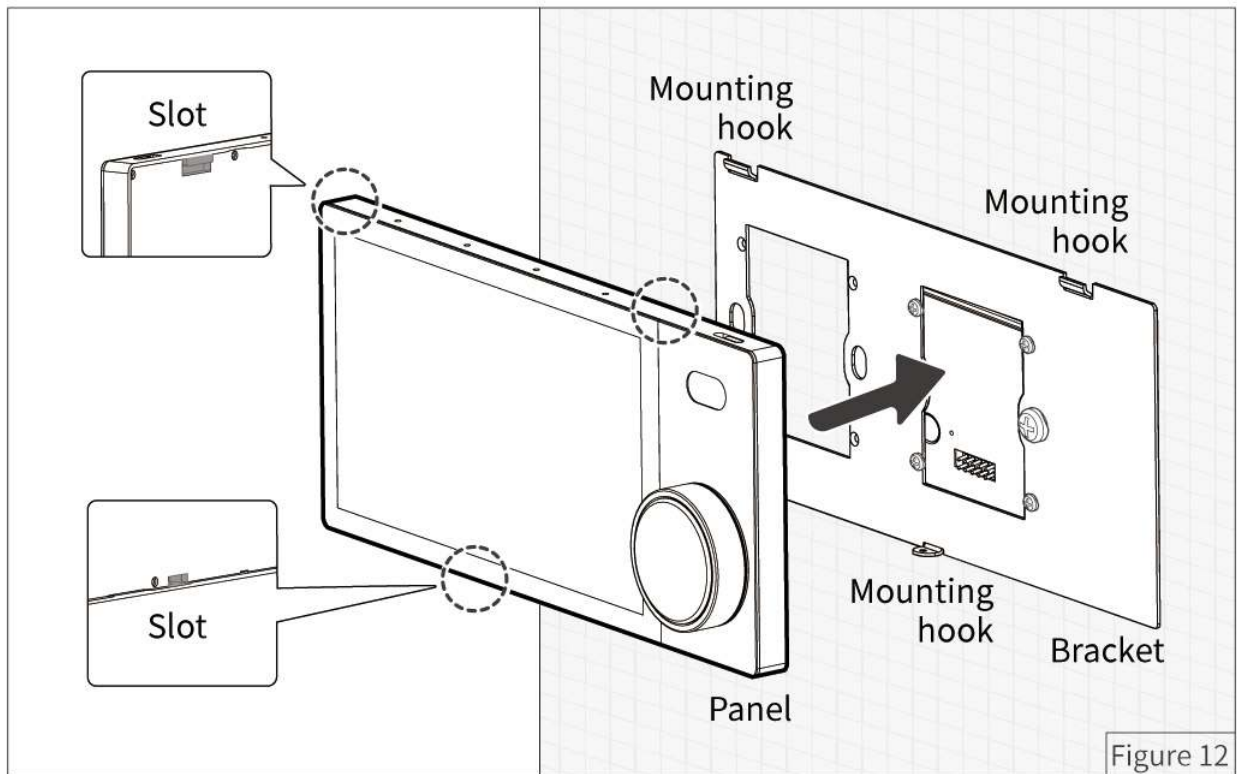


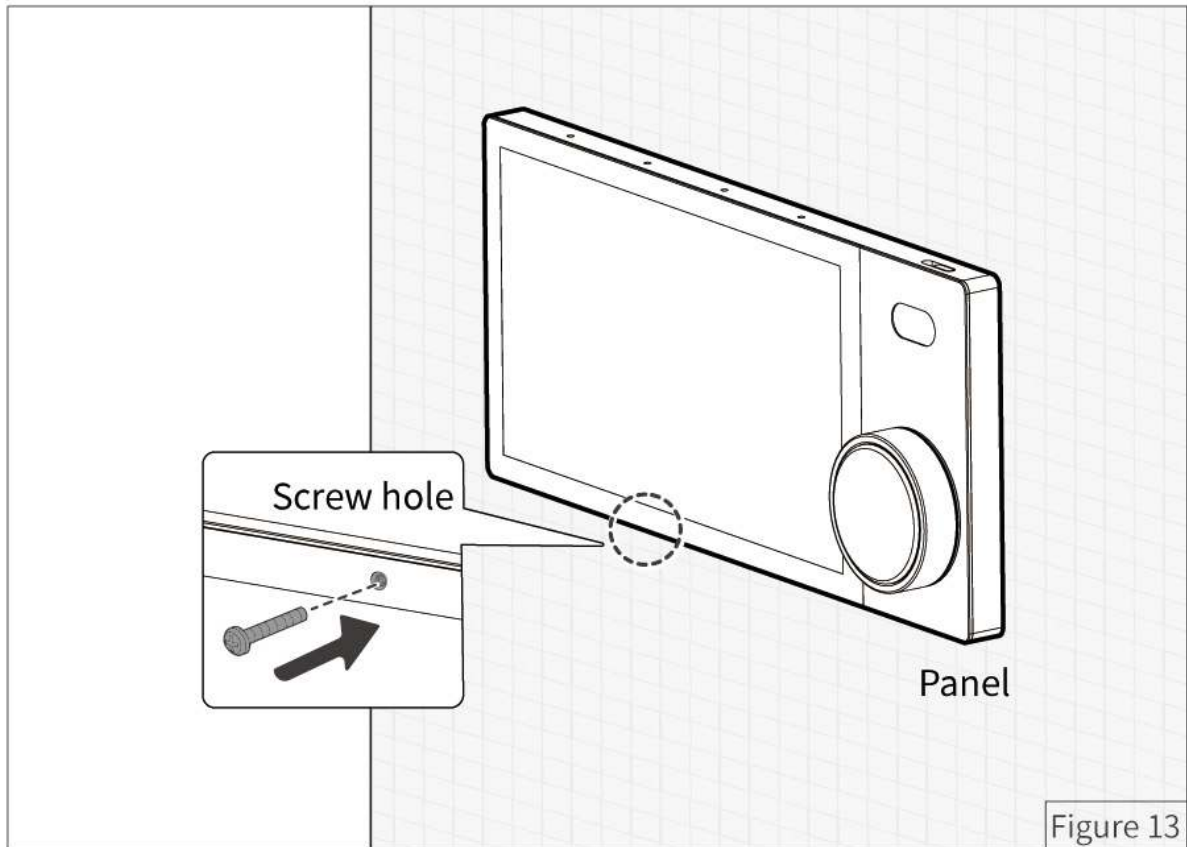
Figure 11

Step 4. Align the mounting hooks with the slots, then assemble the panel onto the bracket.



Step 5. Fix the panel to the bracket with a screw.

Note: Before powering on, please ensure the device is tightly on the wall body.

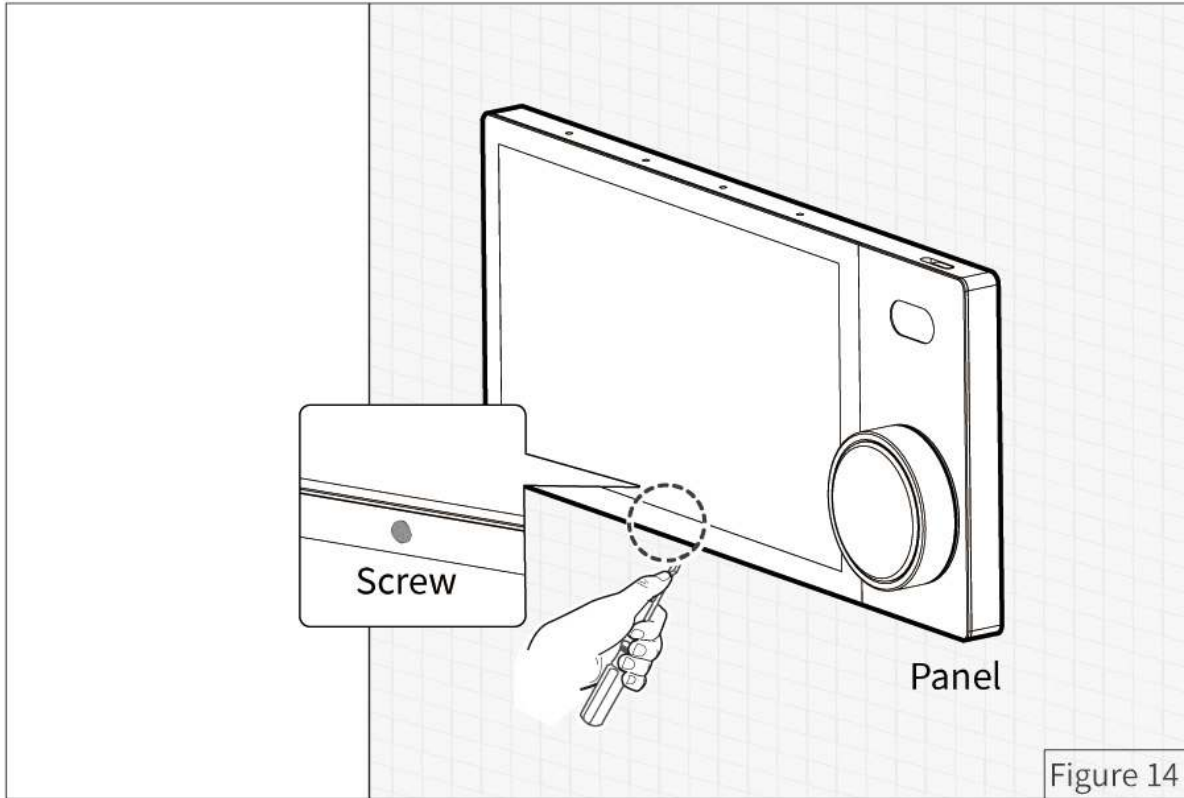


□ □ Disassembly

Warning: Before performing any disassembly procedures on the device, it is crucial to disconnect the device from all voltage sources. This step is necessary to ensure the safety of the technician and prevent any potential damage to the device.

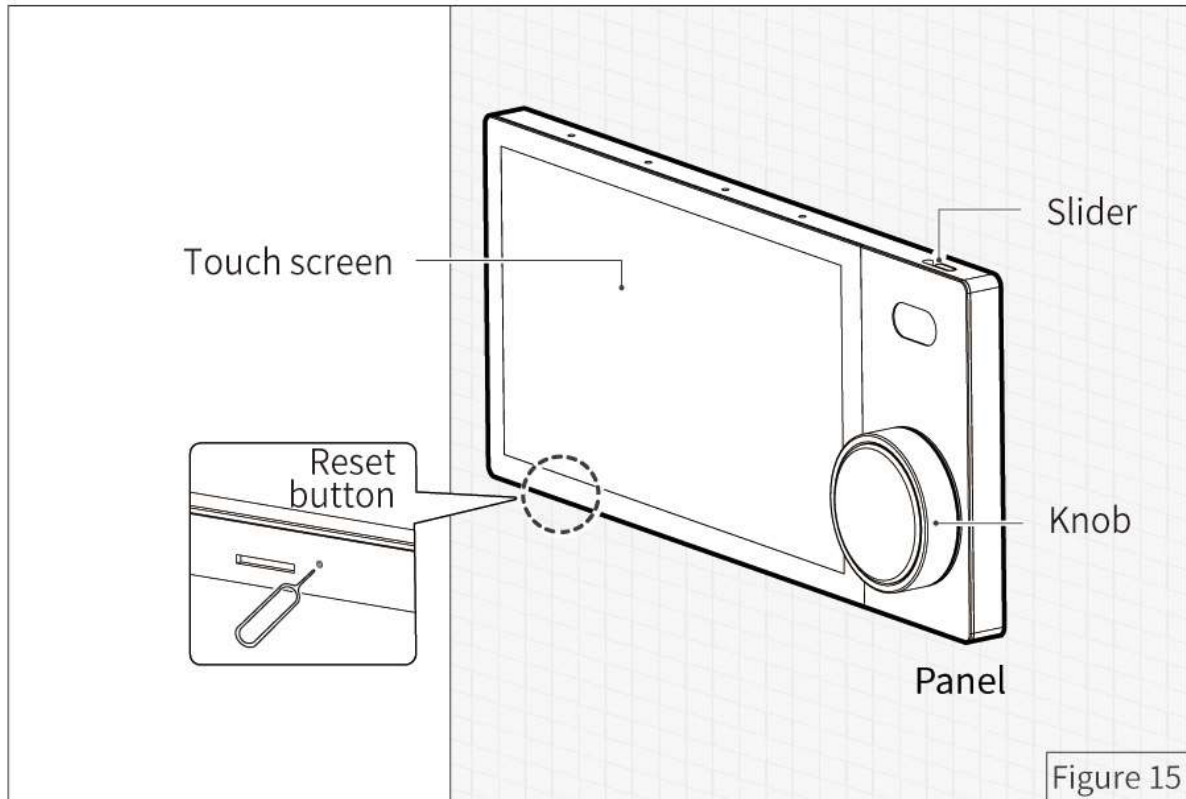
Step 1. It is recommended to use a screwdriver to loosen the screw at the bottom of the panel, then loosen the panel.

Step 2. To remove the panel, bracket and power interface, please refer to the reverse steps in the section **Installation**.



□ □ Operation

The device is configured with one knob, one reset button, one touch screen, one slider, as described below.



- Knob

Tips: There are three setting options for users to trigger the scenes through the knob. For details, please refer to **Section 2** in the following chapter *Touch Screen*.

Operation	Result
Shortpress	Back to home page.
Rotate clockwise / Rotate counter-clockwise / Long press	When the device is in standby mode or on the scene page, the scene can be triggered.
Rotate clockwise / Rotate counter-clockwise	1. When the device is on the lighting page, the light brightness can be adjusted. 2. When the device is on the curtain page, the range of opening and closing can be adjusted. 3. When the device is on the air-conditioning page, the temperature can be adjusted.

- ResetButton

Note: It is recommended to use an eject pin to press reset button.

Operation	Result
-----------	--------

Long press the reset button	Restart device

- **Slider**

Operation	Result
Move the slider left or right.	Camera can be manually blocked or unblocked.

- **Touch Screen**

This chapter offers interactive information about the user interface that Source 7 has.

Tips: Before operation, please bind the required residence project through On Pro APP. For details, please refer to the section On Pro APP in the chapter *Commissioning*.

1. Home

Home page contains all favorites, such as device function, scenes, automation and so on.

Step 1. Click to proceed with quick control.

Tips: For different devices, the functional icons may differ. Here it takes the icons for "AC" as an example.

Step 1.1. Click to set or cancel favorites.

Step 1.2. Click to increase or decrease temperature.

Step 1.3. Click to turn on or off.

Step 1.4. Click to adjust fan speed.

Step 2. Click to enter the page for further settings.



2.Device/Scene

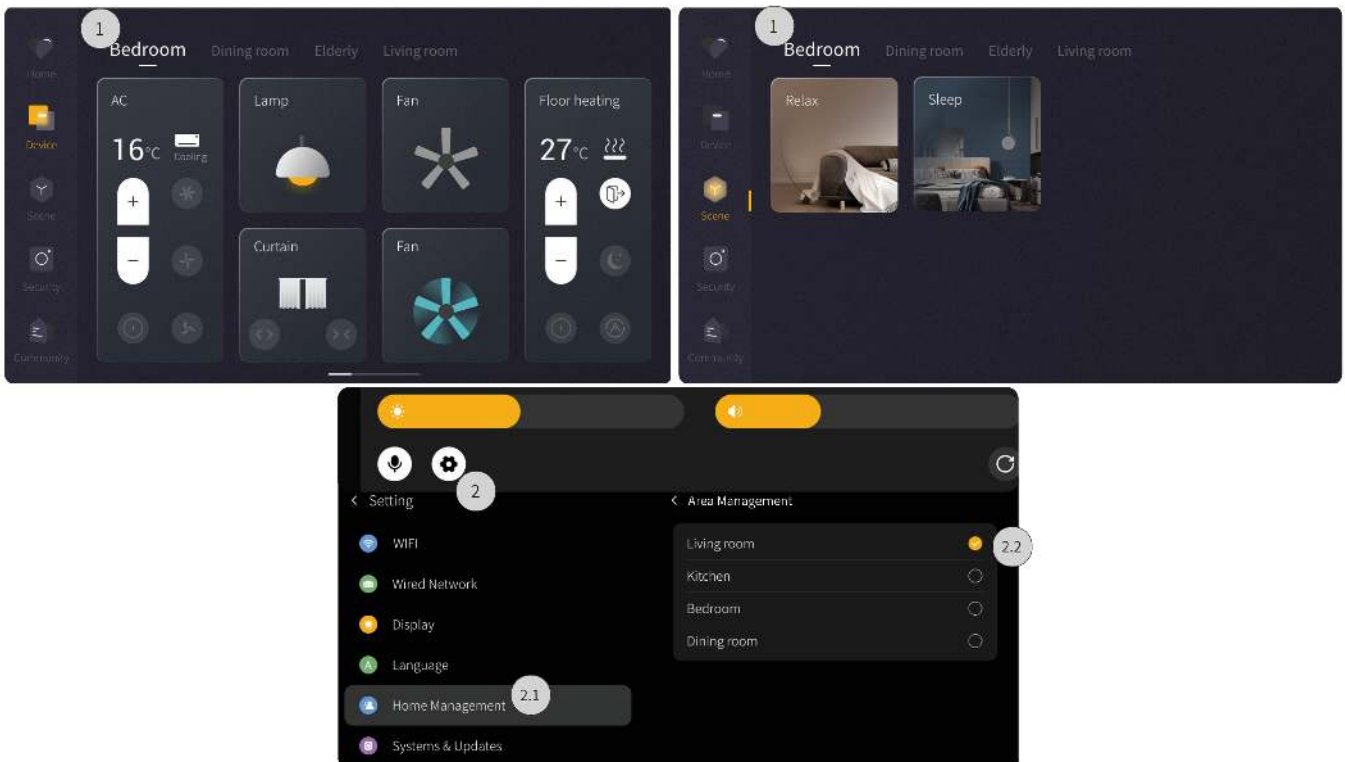
Device page contains the device function configured in the current area. Scene page contains the scenes configured in the current area.

Step 1. Click the area needed. To bad more or less area, please skip to Step 2. If no need for that, you may proceed with quick control for the devices, as described in the previous section.

Step 2. Swipedown the top tab to click the setting icon.

Step 2.1. Click 'Home Management' to enter the page for 'Area Management'.

Step 2.2. Tick the area needed.



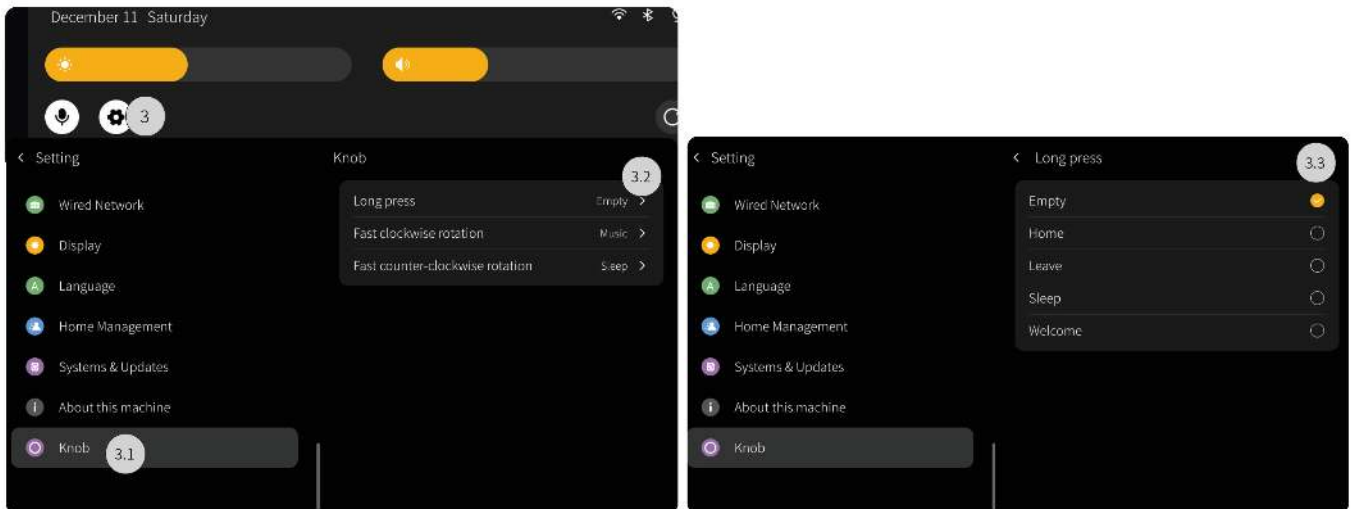
Tips: There are three setting options for users to trigger the scenes through the knob. Please refer to the following steps to set.

Step 3. Swipedown the top tab to click the setting icon.

Step 3.1. Click "Knob".

Step 3.2. Click the operation needed.

Step 3.3. Tick the scene needed.



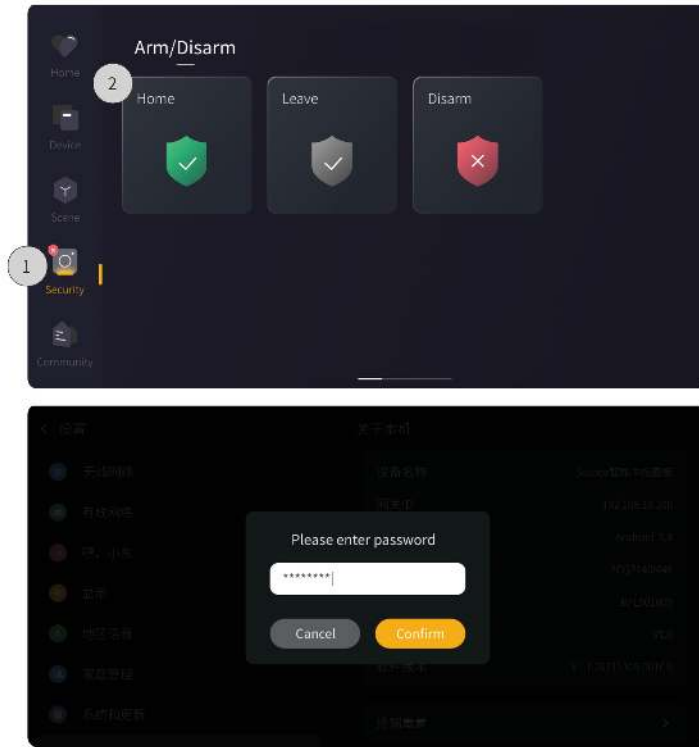
3. Security

Security page is used for viewing all arm and disarm settings.

Step 1. Click "Security" to enter the page of "Arm / Disarm "

Step 2. Click the tab to enable or disable settings.

Tips: To resume disarm, please enter the password first. The default password is 123456.

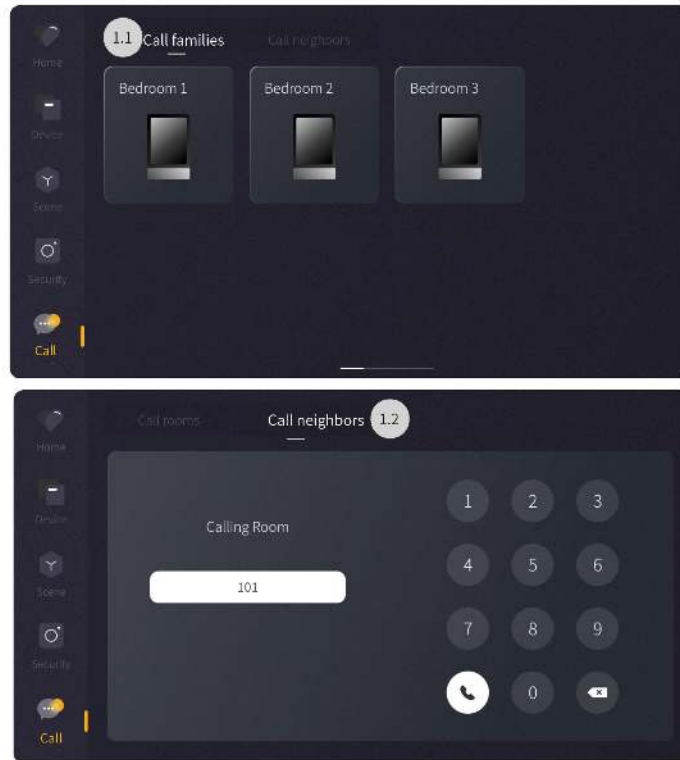


4.Call

If other Source 7 is also bound to the current residence project, users can access the Call page to view the configured area of that device and make a call.

1.1.Call Families: Click "Call families" to view all rooms configured for other Source 7. Then click the room tab to proceed with calling.

1.2.Call Neighbors: Click "Call neighbors" and dial the neighbor's room number.



□ □ Commissioning

Please note to proceed with debugging and commissioning according to the power interface used, as described below.

- Zigbee interface

Tips: Before debugging and commissioning, please prepare the necessary tools as described below.

Software	Hardware
1. Valid Studio APP accounts that obtain authorization for debugging 2. Smartphones running with Studio APP (above V2.5.1) 3. Smartphones running with On Pro APP (above V1.6.3)	1. Source Zigbee power interface (Model: MPW S2R1ETH-ZB.18) 2. Other Zigbee devices Note: Here it takes Spring Series Environment Control Panel (Model: MPM CATF-D-ZB.18) as an example.

1. Log into Studio APP

Step 1. Input Account & Password.

Step 2. Click "Agree".

Step 3. Click "Log in".



2. Create Project

Step 1. Click 'Project'.

Step 2. Click '+' to create project.

Step 3. Input information for new project.

Step 4. Click 'Finish'.



3. Bind Gateway

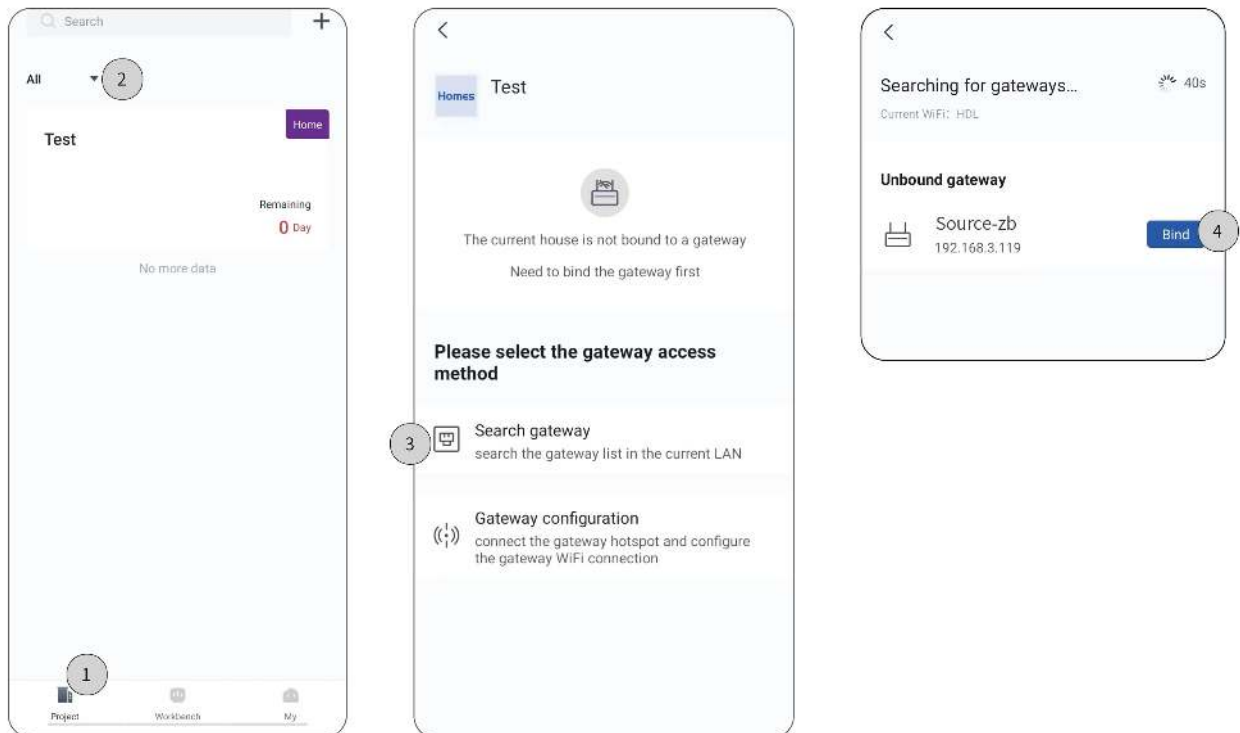
Note: Power on Zigbee interface at first. Make sure the mobile phone and Zigbee interface be connected with the same LAN.

Step 1. Click 'Project'.

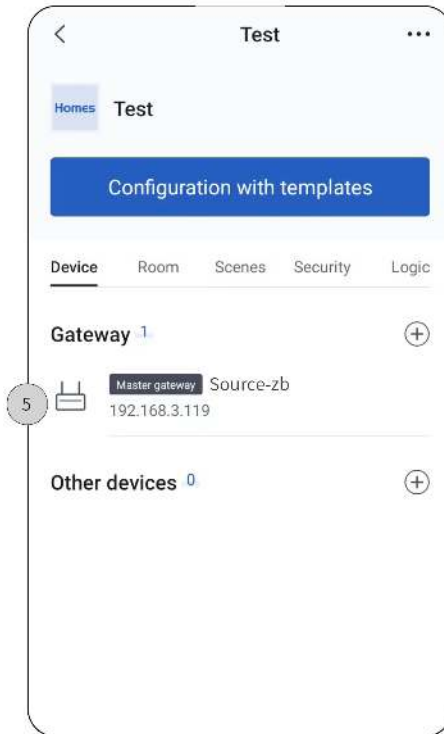
Step 2. Select the project.

Step 3. Select 'Search gateway'.

Step 4. Click 'Bind' after successfully searched.



Step 5. After successfully bound, click to enter the setting page.



4. Create Room

Step 1. Click "Room" to enter the setting page. --> Step 2. Click "+" to add floor.

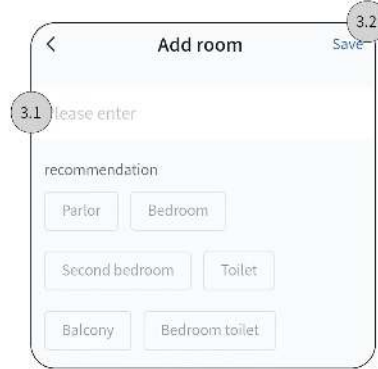
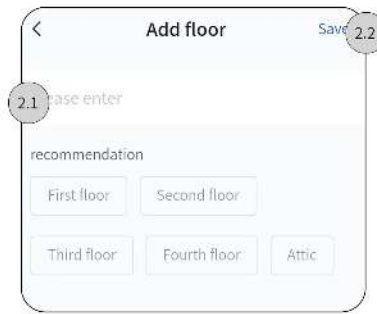
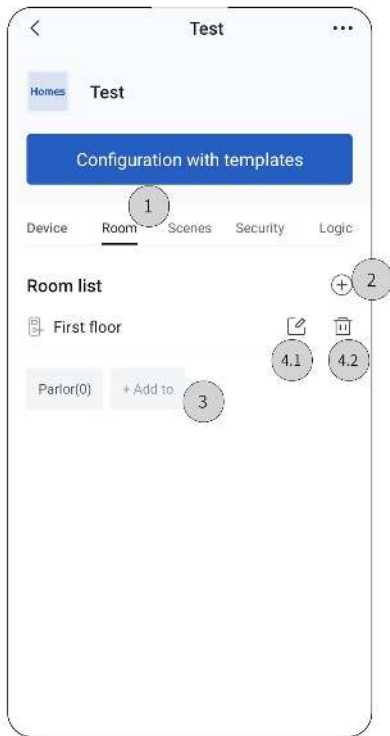
Step 2.1. Input the name of floor. --> Step 2.2. Click "Save".

Step 3. Click "+" to add room

Step 3.1. Input the name of room. --> Step 3.2. Click "Save".

Step 4.1. Click "Room" to enter the setting page of the floor.

Step 4.2. Click to delete the floor.



5. Add Device

Tips: Here it takes Spring Series Environment Control Panel (Model: MFM CATF-D-ZB.18) as an example to show more details.

Note: Power on Spring Series Environment Control Panel at first. Make sure the mobile phone, Source_Zigbee interface and Spring environment panel be connected with the same LAN.

Step 1. Click 'Device'.

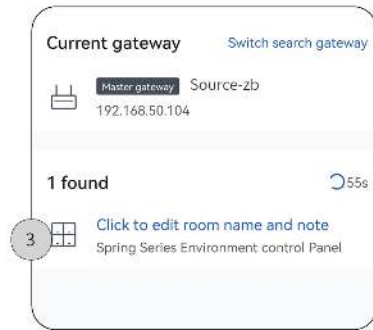
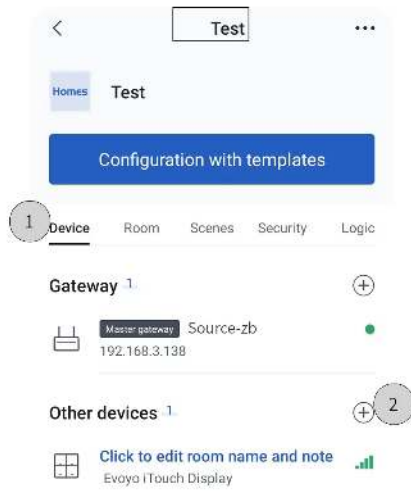
Step 2. Click "+" to add device.

Tips: Please refer to Spring Series Environment Control Panel Instruction Manual for operation about network connection.

Note: If network connection fails, re-start network connection. For more details, please refer to Spring Series Environment Control Panel Instruction Manual.

Step 3. After successfully added, click to enter the setting page.

Note: Product name shown in Studio APP is for reference only and the actual product should prevail.



6. Function Setting for Device

Step 1. Click "• • •" to check general information or delete device.

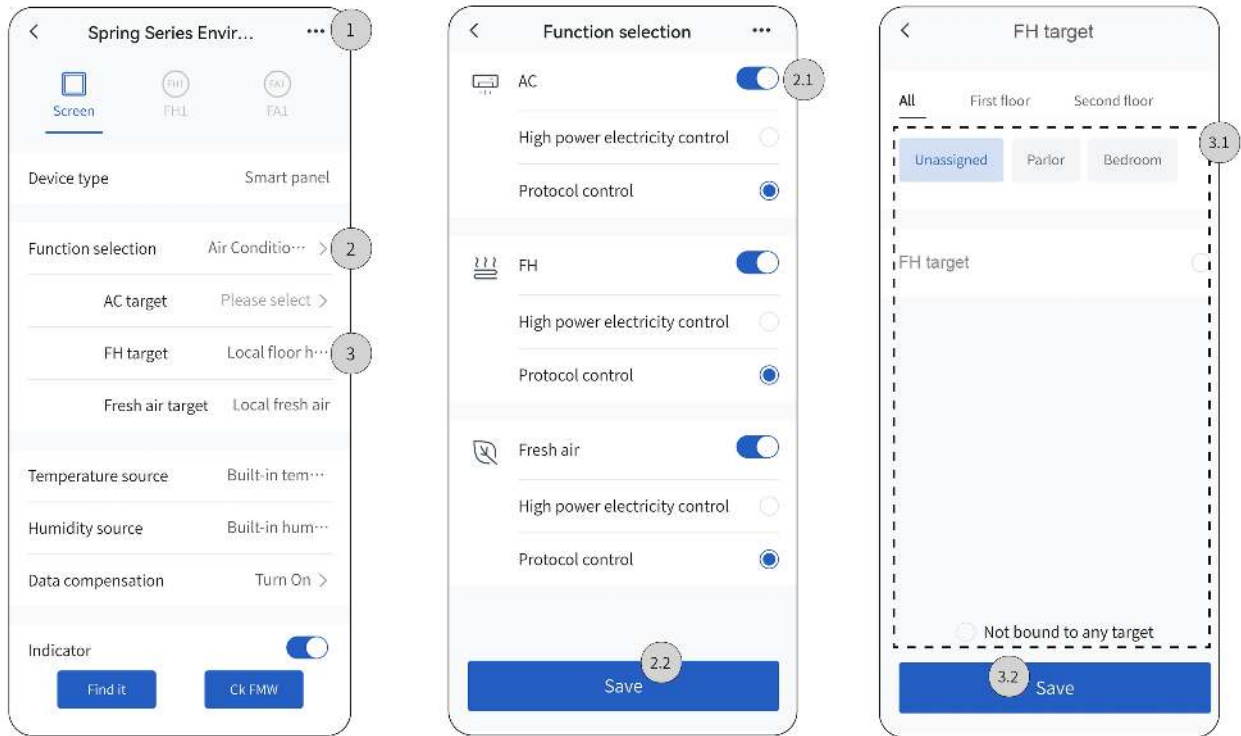
Step 2. Click to enter the function selection page.

Step 2.1. Turn on/off the desired function. --> Step 2.2. Click "Save".

Step 3. Click to enter the function setting page.

Step 3.1. Proceed function settings, i.e., assign target area, bind/not bind target device. For instance, select FH target and assign it to bedroom.

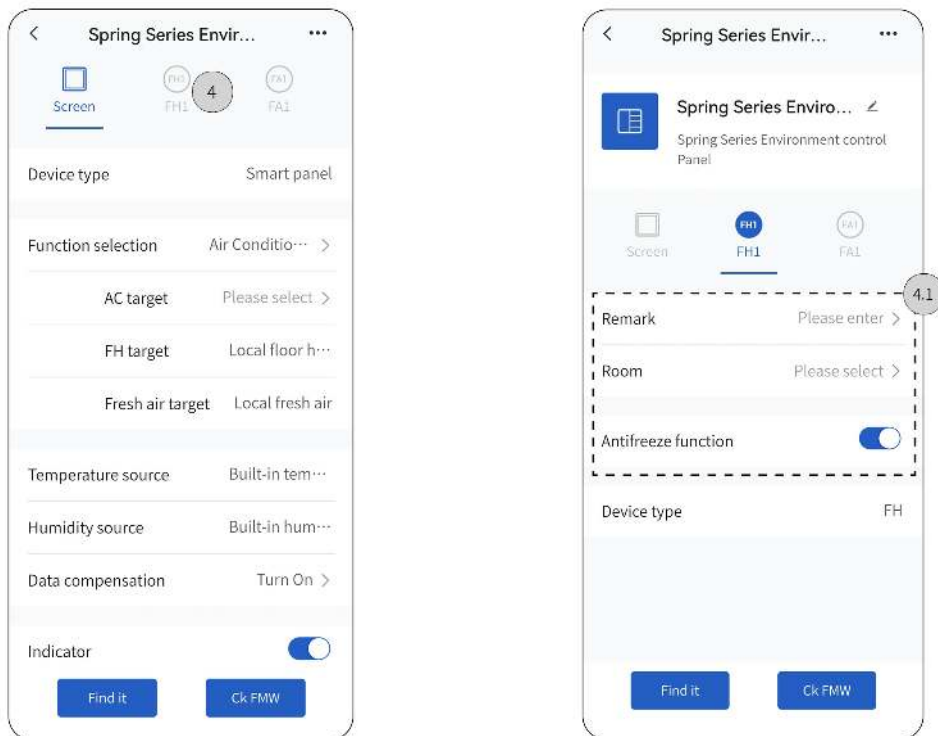
Step 3.2. Click "Save".



Tips:As shown at previous step, floor heat is enabled, now, take it as an example to show more settings.

Step 4.C Click "FH 1" to enter the function setting page.

Step 4.1 Modify device name; Assign target area; Enable/disable antifreeze function.



7.C create Scene

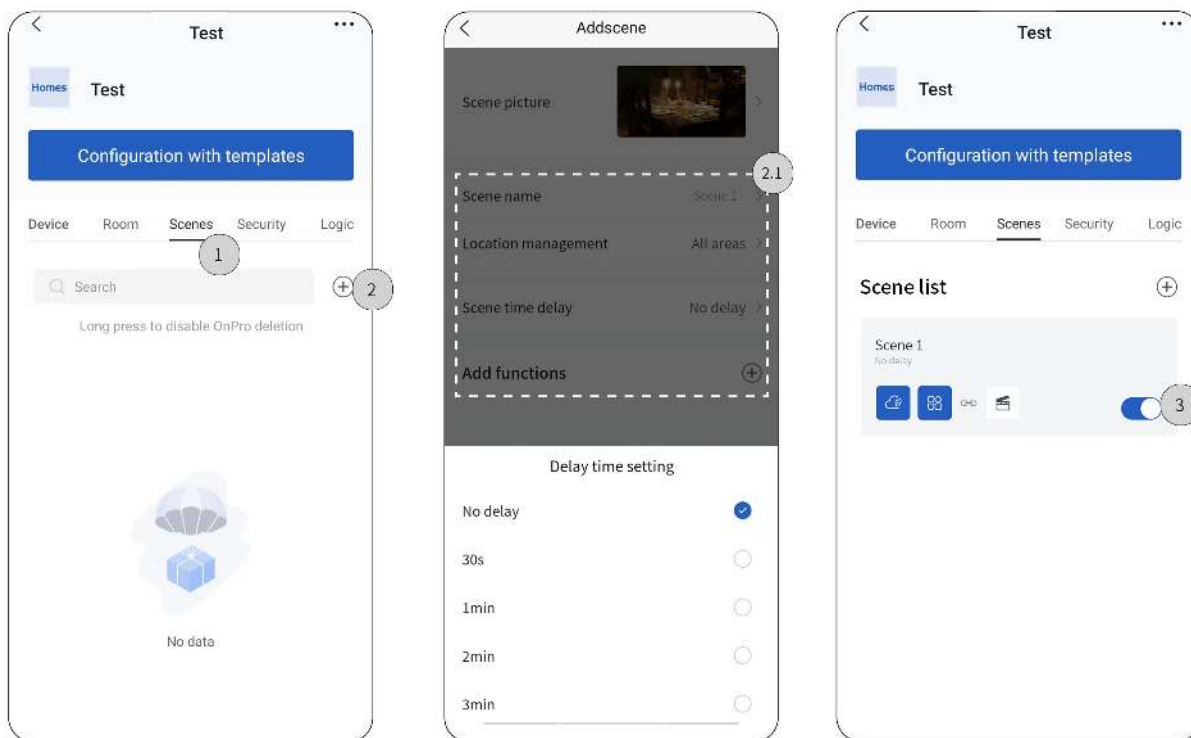
Tips: Here it takes "Scene 1" as an example to show more details.

Step 1. Click to enter the scene setting page.

Step 2. Click "+" to create scene.

Step 2.1. Input scene name, e.g., "Scene 1"; assign target area; select delay time; add functions.

Step 3. After successfully setting, check the scene from the list and proceed testing if needed.



8. Create Automation

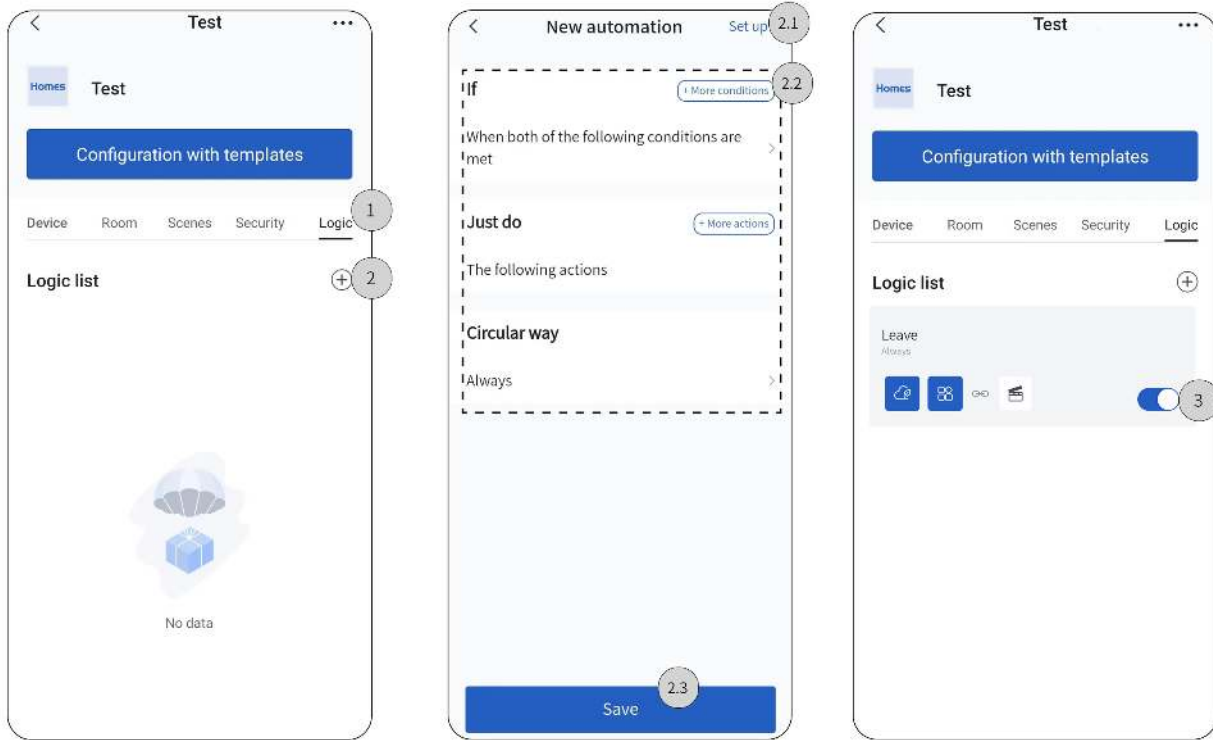
Tips: Here it takes "Leave" as an example to show more details.

Step 1. Click to enter the automation setting page. --> Step 2. Click "+" to create logic.

Step 2.1. Click "Setup" to input scene name, e.g., "Leave". --> Step 2.2. Add conditions; Set actions; Select trigger period

Step 2.3. Click "Save".

Step 3. After successfully setting, check the logic from the list and proceed testing if needed.



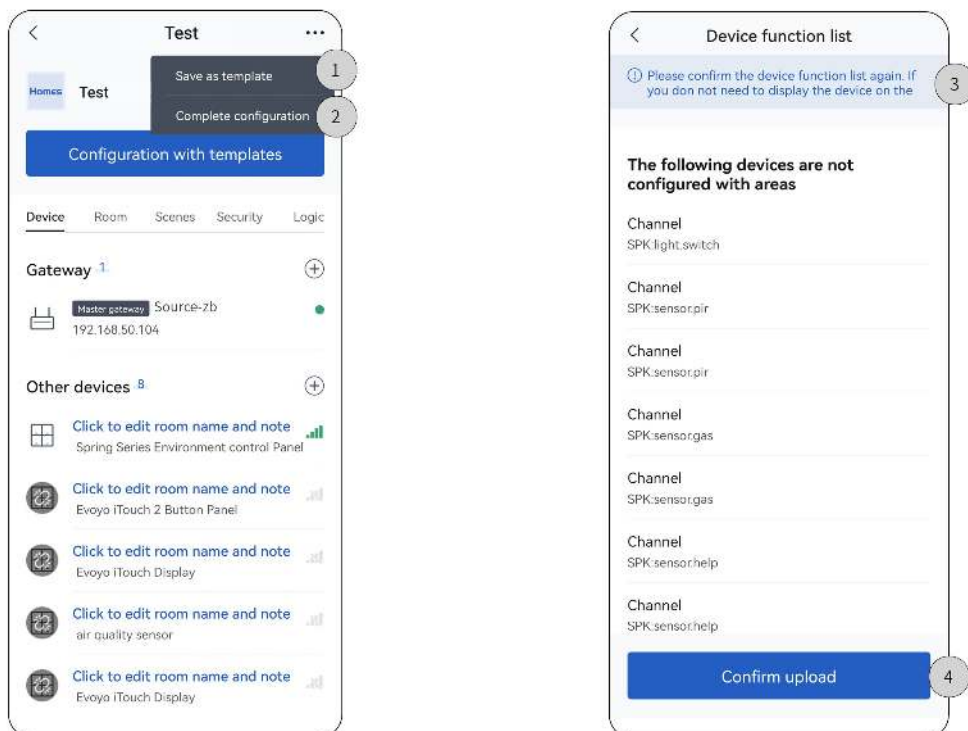
9.Upbad ProjectData to Cloud

Note: Before data upload, please make sure Studio APP is in valid and stable network connection.

Step 1. Back to project home page and click "...". --> Step 2. Click "Complete configuration".

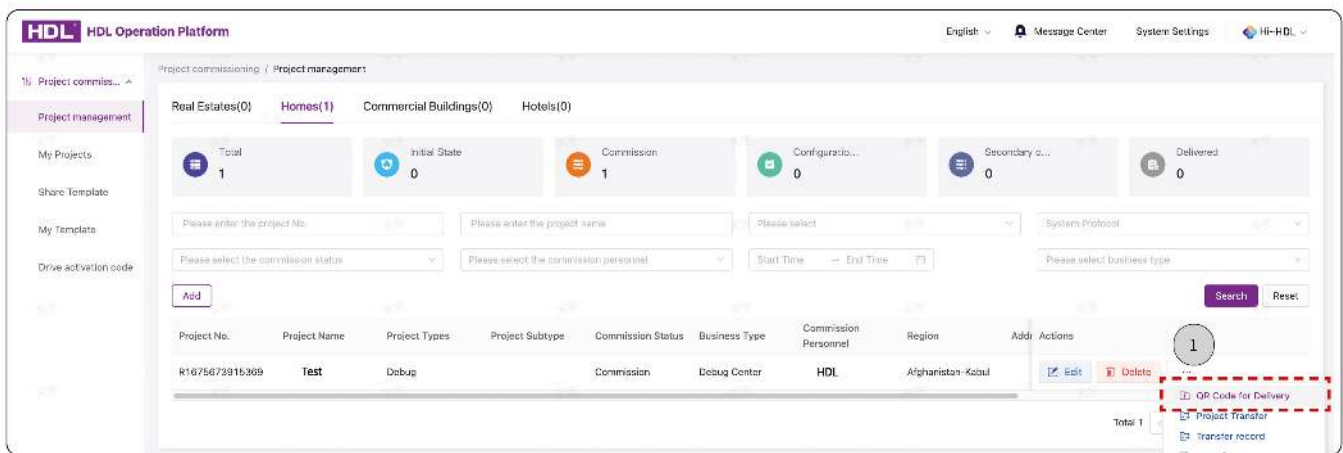
Step 3. Re-confirm the functions to be uploaded. For those not needed in On Pro APP, please slide left to select "Disable".

Step 4. Click "Confirm upload".



10. Deliver Project

Step 1. Make sure that the project has been updated to C bud (see Section 9), then log in to HDL A IoT to check for QR code. Once the end users scan the code, the project delivery is complete.



11. Secondary Configuration

Regarding those delivered projects, if users need further configuration or modification, please firstly authorize the debugging privilege through On Pro APP, then go back to the commissioning software to proceed with secondary configuration, as described below.

Step 1. Log into On Pro APP, click "Individual".

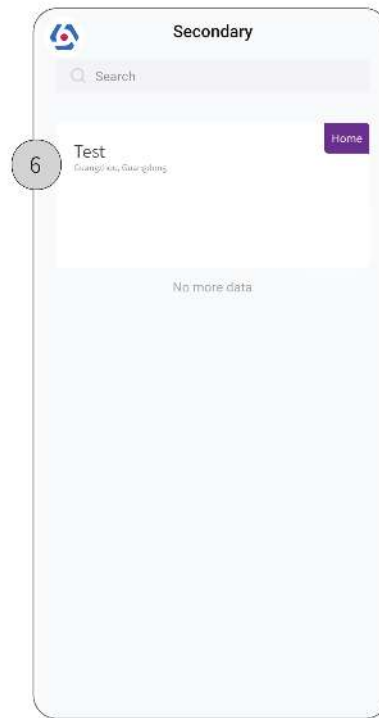
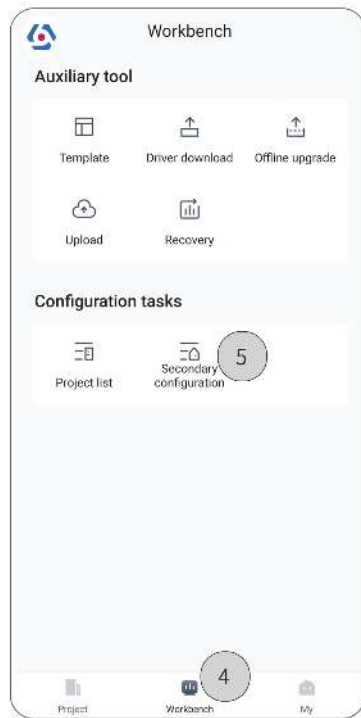
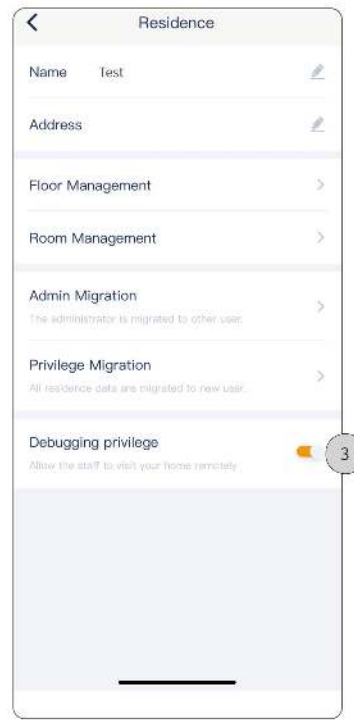
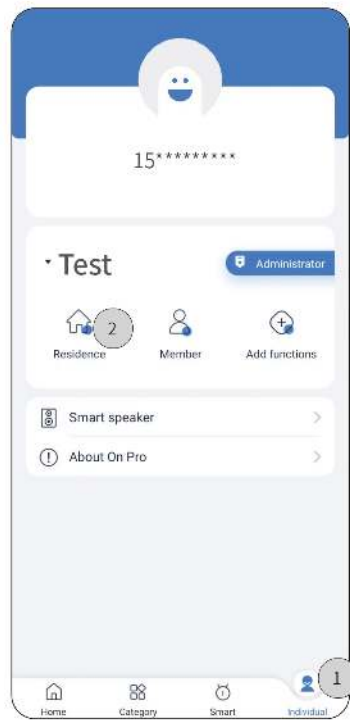
Step 2. Click "Residence".

Step 3. Activate "Debugging privilege".

Step 4. Log into Studio APP, click "Workbench".

Step 5. Click "Secondary configuration".

Step 6. Click the project.



• Buspro /KNX interface

Tips: Before debugging and commissioning, please prepare the necessary tools as described below.

Device Type	Software	Hardware
Buspro device	1. Valid HDL Studio accounts that obtain authorization for debugging 2. Computers running with HDL Studio (above V 1.5.0) 3. Smartphones running with On Pro APP (above V 1.6.3)	1. Source Buspro power interface (Model: MPW S2R1ETH-BP.18) 2. Other Buspro devices

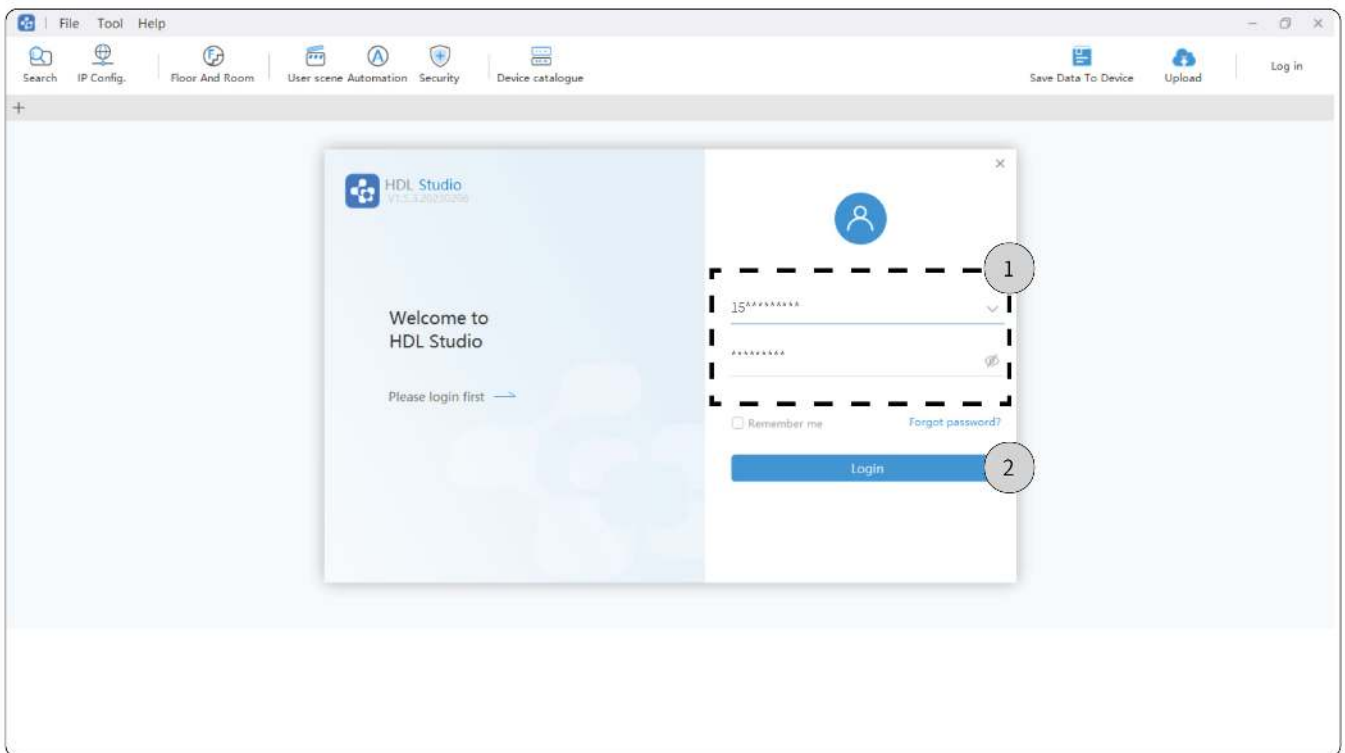
KNX device	1. Valid HDL Studio accounts that obtain authorization for debugging 2. Computers running with HDL Studio (above V1.5.0) & ETS 5 (above V6.0.6) 3. Smartphones running with On Pro APP (above V1.6.3)	1. Source KNX power interface (Model: M PW S2R1ETH - KT.18) 2. Other KNX devices
------------	---	---

1. Login to HDL Studio

Step 1. Input Account & Password.

Step 2. click "Login" to enter main page.

Note: The username and password refer to the ones you have used to register an account in HDL A IoT, please well prepare before logging in.



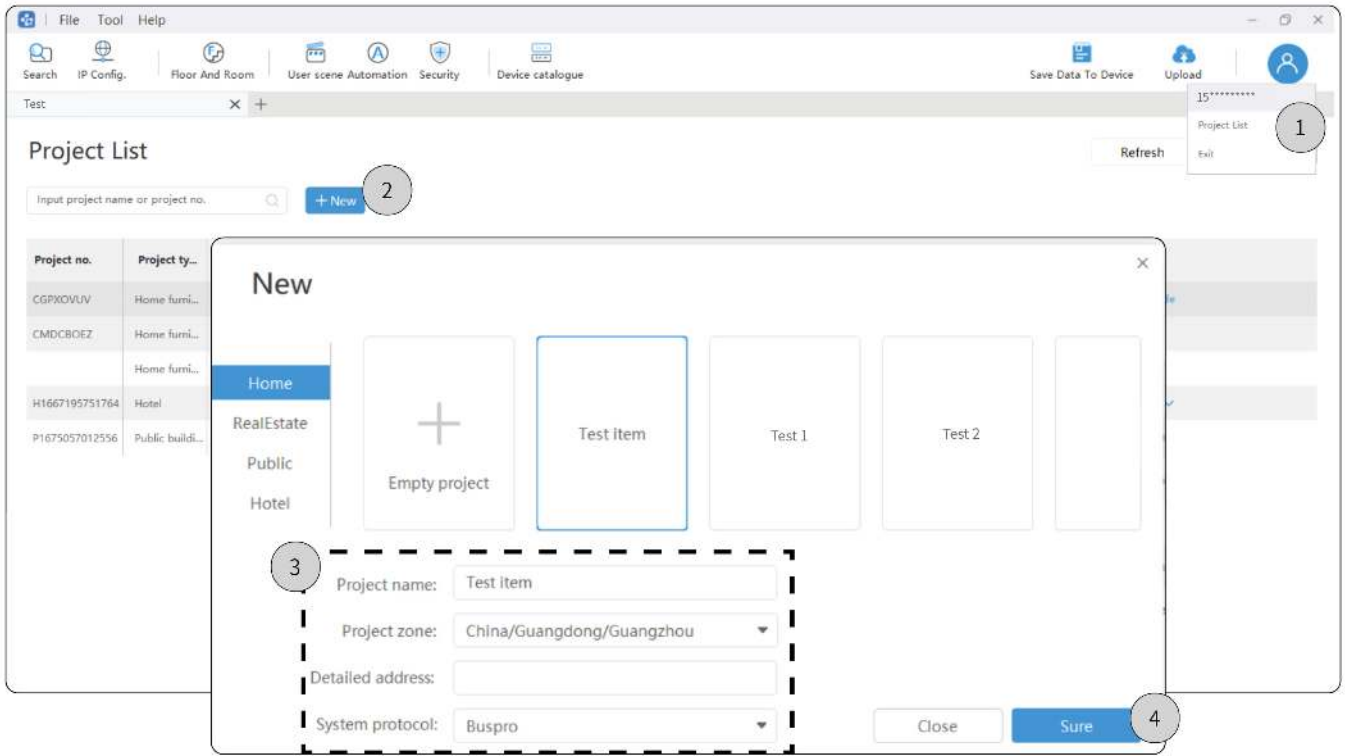
2. Create Project

2.1. Create Project (option 1)

Step 1. Click the icon for personnel center to select "Project List". --> Step 2. Click "+New".

Step 3. Input project information, including project name, project zone, detailed address and so on.

Step 4. Click "Sure" to complete.

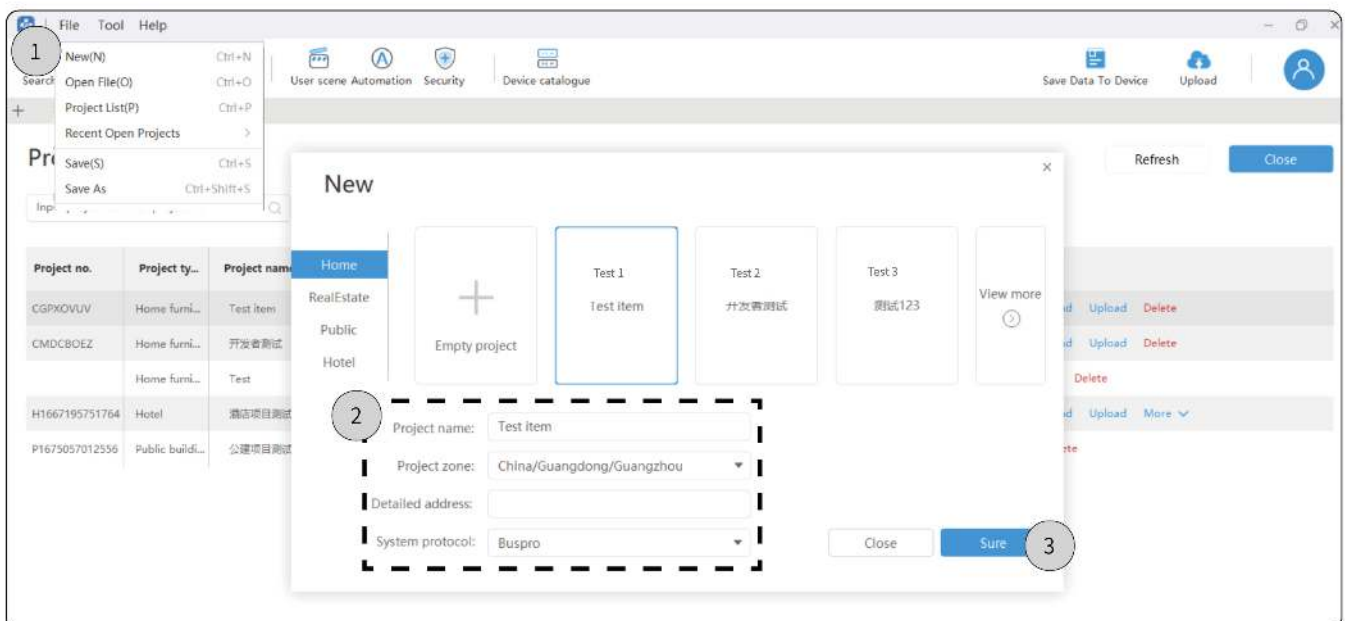


2.2.C createProject(option 2)

Step 1.C lick 'File'. --> Step 2.C lick 'New'.

Step 3. Input project information ,including project name,project zone,detailed address and so on .

Step 4.C lick 'Sure' to complete.



2.3. Open Project

Step 1. Click the icon for personnel center to select "Project List".

Step 2. Double click the project.

Note: If the project has not been downloaded, please click "Download" then open it.

The screenshot displays the 'Project List' interface. At the top, there is a search bar and a '+ New' button. Below is a table with the following data:

Project no.	Project ty...	Project name	Project zone	Detailed adr.	Project Data status	Debug status	Last debug ti...	Operation
EPXOVUV	Home furni...	Test	Afghanistan		Unuploaded Cloud change	To be delivere	2023/2/12	Open Download Upload QR Code
CMDCBOEZ	Home furni...	开发者测试	中国/北京/东城		Unuploaded	Debugging	2023/2/9	Open Download Upload Delete
	Home furni...	Test	中国/广东/广州		Unuploaded	Initial state	2023/2/6	Open Upload Delete
H1667195751764	Hotel	酒店项目测试	阿曼内地地区			Initial state	2023/2/12	Open Download Upload More
P1675057012556	Public buildi...	公建项目测试	中国/天津/河西			Debugging	None	Download Delete

3. Floor and Room

3.1. Add area

Step 1. Click "Floor and Room". --> Step 2. Click "+Area".

Step 3. Click "Add child area".

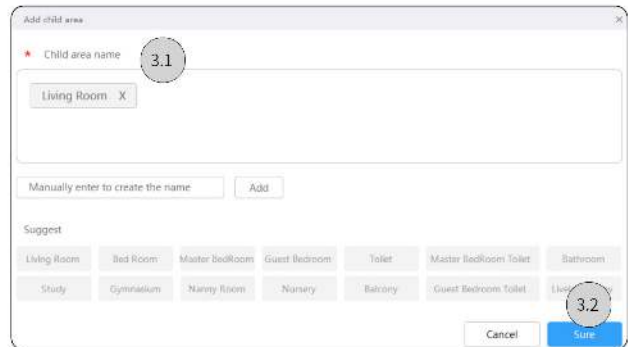
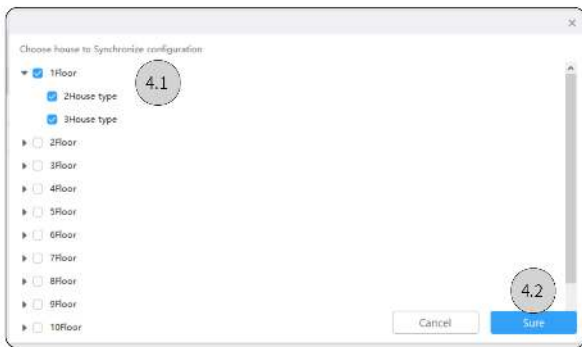
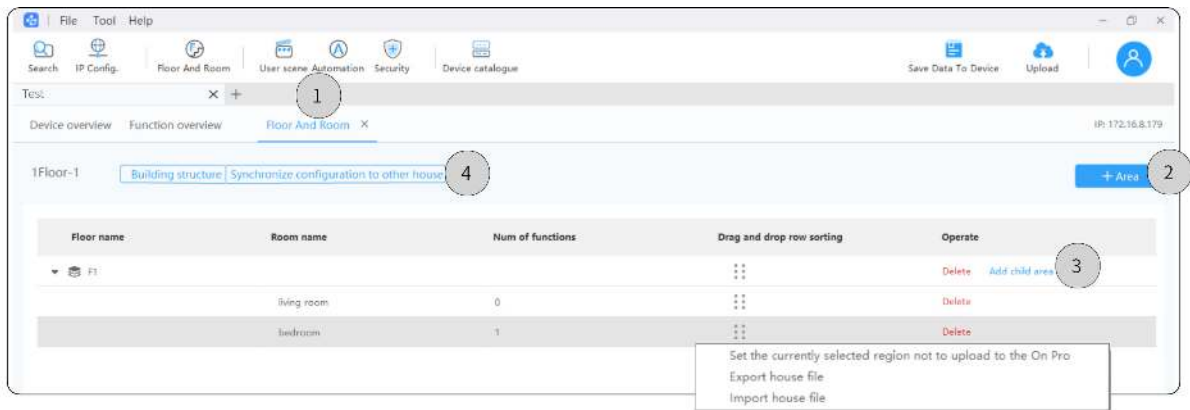
Step 3.1. Input or select the name of area. --> Step 3.2. Click "Sure" to complete.

3.2. Synchronize configuration to other house

Step 4. Click "Synchronize configuration to other house".

Step 4.1. Select the target house. --> Step 4.2. Click "Sure" to complete.

Tips: The operation above enables synchronization for area setting and house configuration.

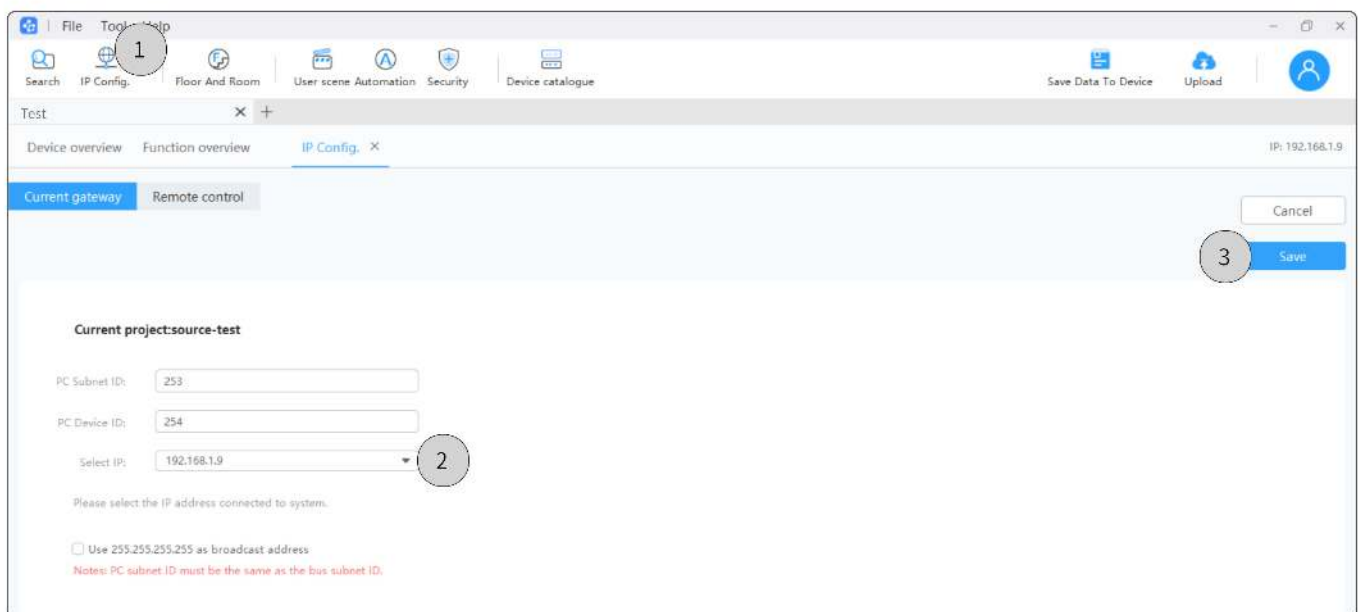


4.Add Device

Tips: Before adding device, please make sure current IP and device IP be kept at the same segment. To modify IP, please refer to Step 1-3; if no need for IP modification, please skip to Step 4.

Step 1. Click **IP Config** --> Step 2. Select IP.

Step 3. Click "Save".



Step 4. In the page of current project, click "Search".

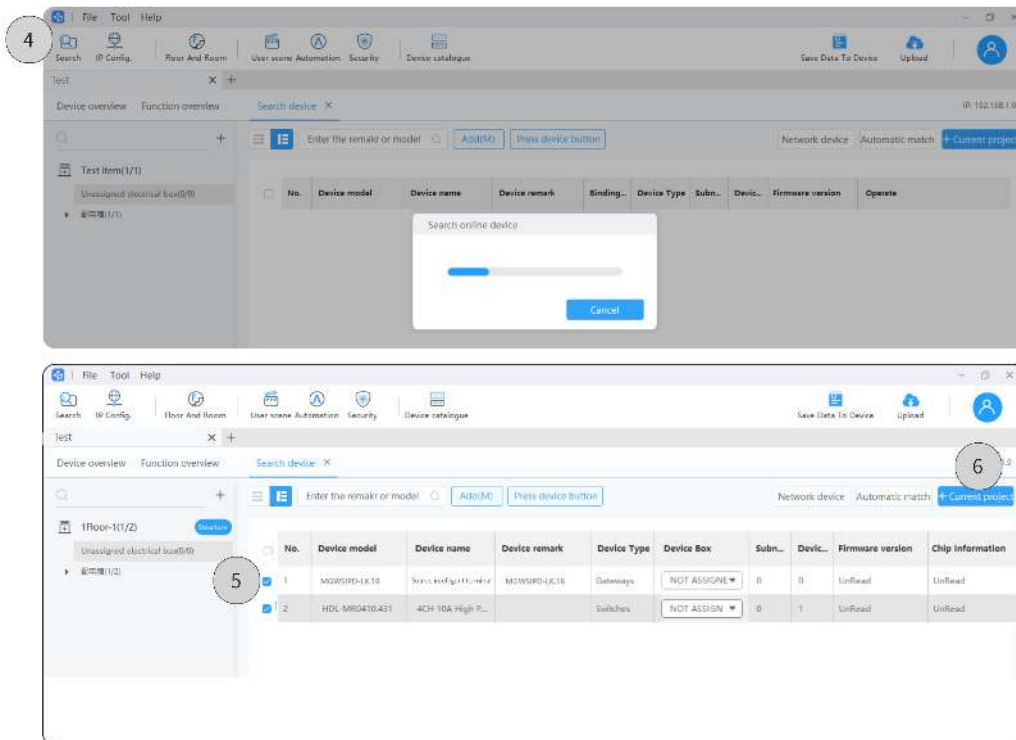
Tips: To switch other area, please click "Structure" to proceed selecting or adding new house.

Step 5. Select the device, e.g., tick "Source intelligent terminal".

Tips: Device names and models shown in HDL Studio is for reference only and the actual product should prevail. To recognize the on-site device by means of HDL Studio, please refer to the followings.

Step 5.1. Double click the device to enter the setting page, then click "Basic setting". --> Step 5.2. Check IP or click "Pointing device".

Step 6. Click "+Current project", then the device(s) can be added to the current project.

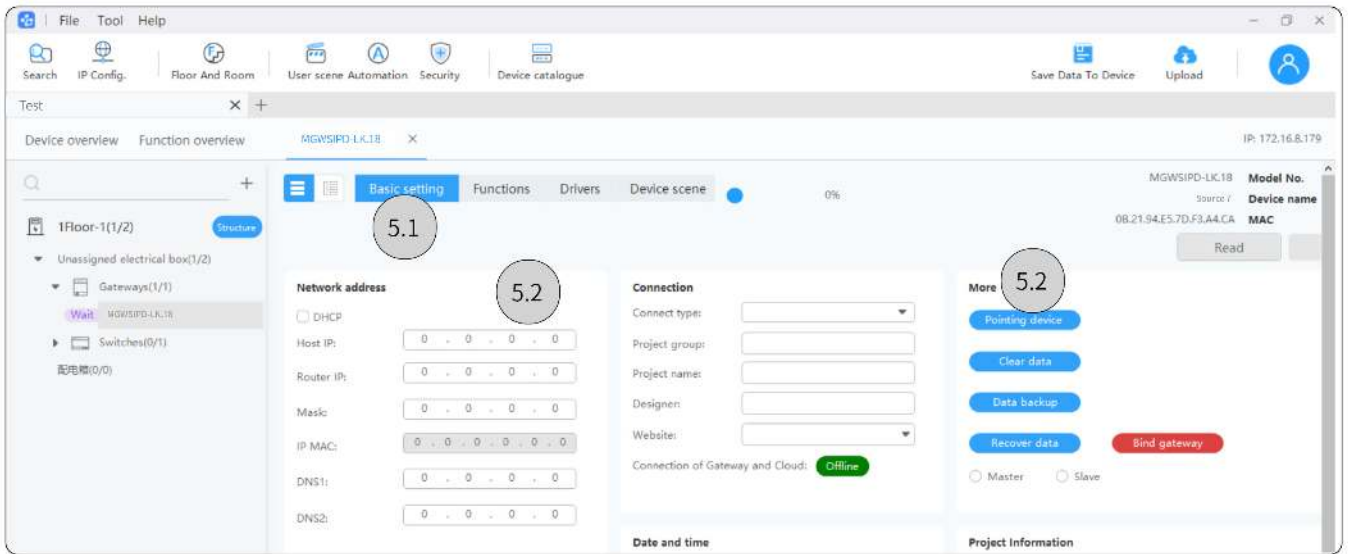


Step 5. Select the device, e.g., tick "Source intelligent terminal".

Tips: Device names and models shown in HDL Studio is for reference only and the actual product should prevail. To recognize the on-site device by means of HDL Studio, please refer to the followings.

Step 5.1. Double click the device to enter the setting page, then click "Basic setting". --> Step 5.2. Check IP or click "Pointing device".

Step 6. Click "+Current project", then the device(s) can be added to the current project.

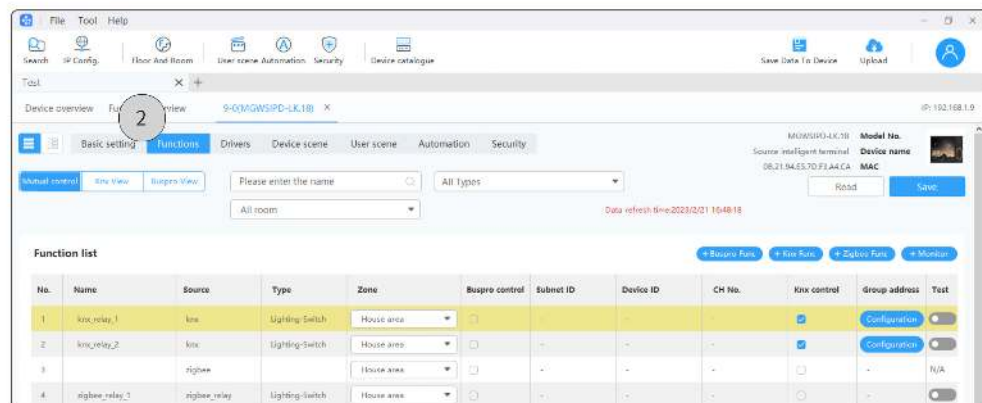
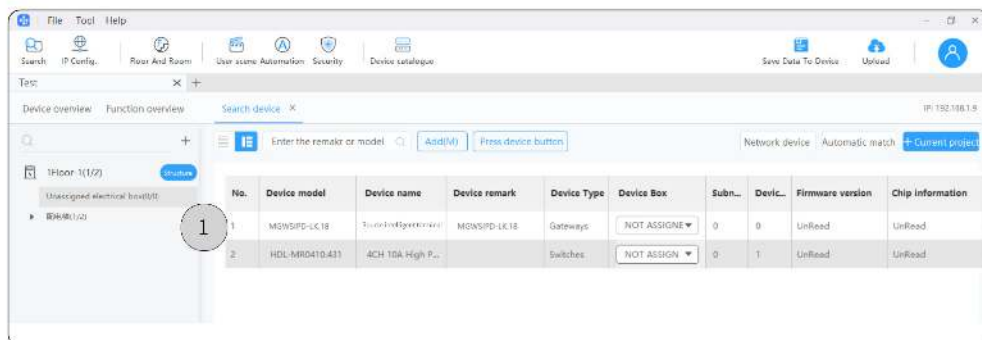


5. Device Basic Setting

When Source 7 is retrofitted with Source_Buspro power interface or Source_KNX power interface, as a whole, it comes to work as a gateway. So, in HDL Studio, users can add sub-devices to Source 7.

Step 1. Double click the device to enter the setting page, e.g., double click 'Source intelligent terminal'.

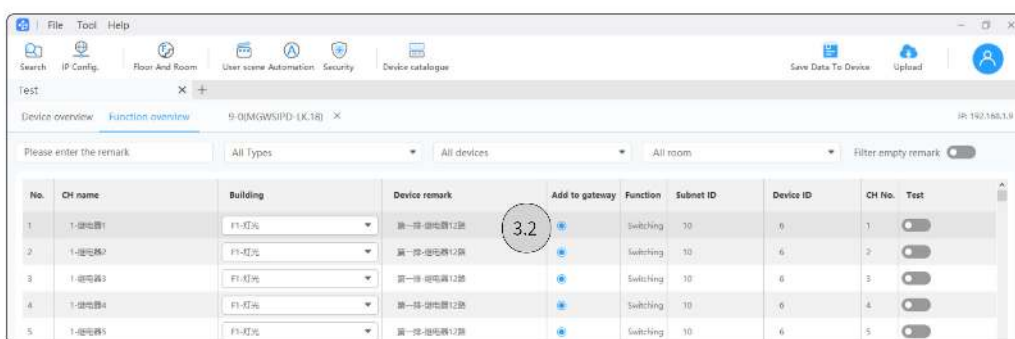
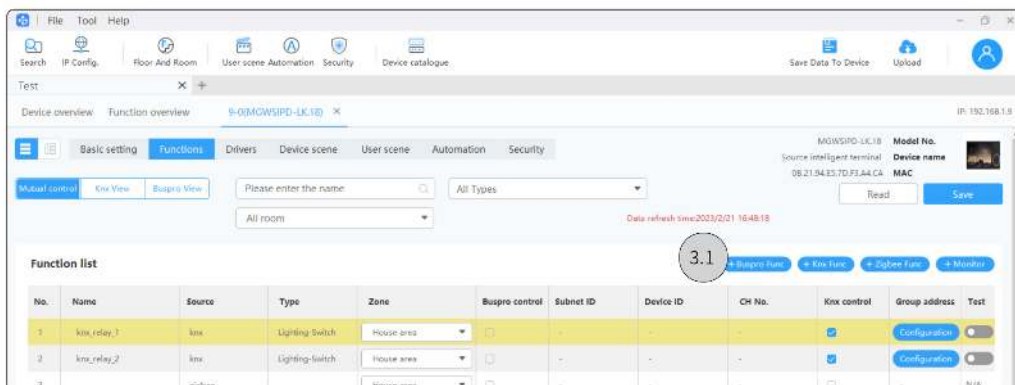
Step 2. Click 'Function'.



Step 3. Applicable for Source 7 configured with Source_Buspro power interface

Step 3.1. Click "+Buspro function".

Step 3.2. Select function then tick "Add to gateway".



Step 4. Applicable for Source 7 configured with Source_KNX power interface

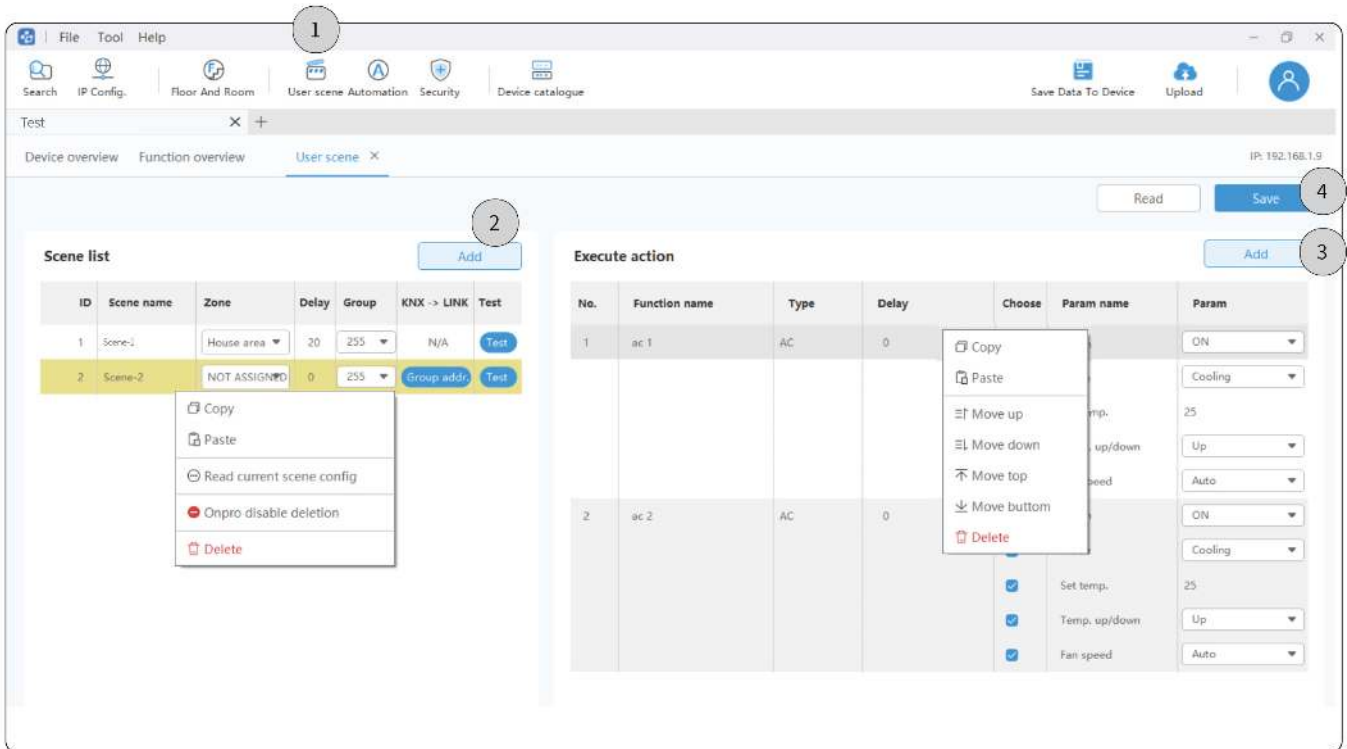
Step 4.1. Click "+KNX function".

Step 4.2. Select function. For instance, select 'Fresh air'.

Step 3.C lick "Add" to create execute action .

Tips:To proceed further setting for the action ,please rightclick and select.

Step 4.C lick "Save" to complete.



7.Security Setting

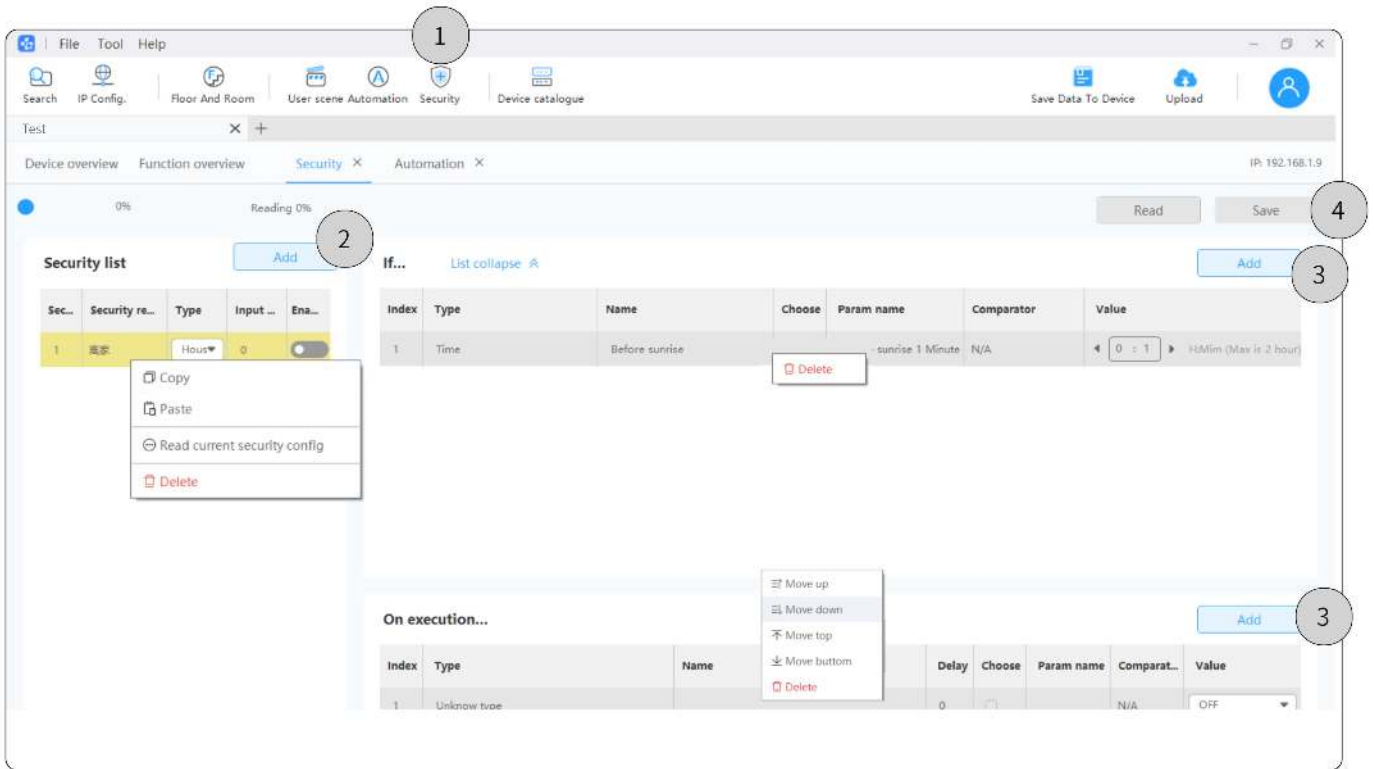
Step 1.C lick "Security" to enter the setting page. --> Step 2.C lick "Add" to create security item .

Tips:To proceed further setting for the security item ,please rightclick and select.

Step 3.C lick "Add" to create the condition and execution action .

Tips:To proceed further setting for the items ,please rightclick and select.

Step 4.C lick "Save" to complete.



8.Automation Setting

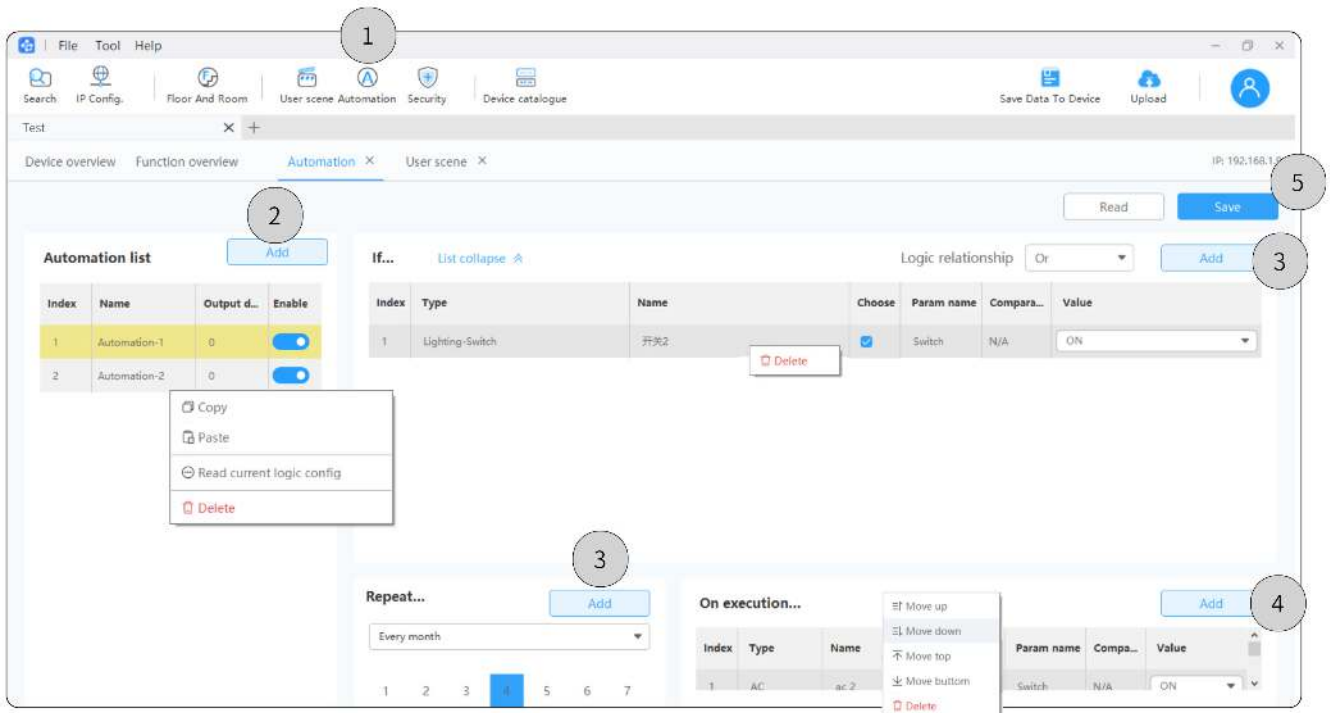
Step 1. Click "Automation" to enter the setting page. --> Step 2. Click "Add" to create automation.

Tips: To proceed further setting for the automation item, please rightclick and select.

Step 3. Click "Add" to create the condition and repeat date. --> Step 4. Click "Add" to create execution action.

Tips: To proceed further setting for the items, please rightclick and select.

Step 5. Click "Save" to complete.



9. Save Data to Device

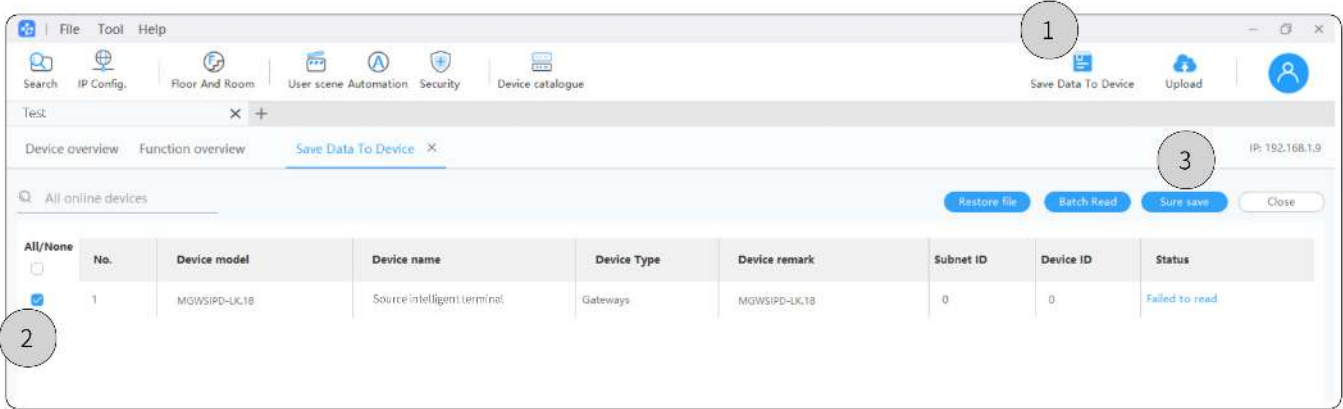
Step 1. Click "Save Data to Device".

Step 2. Select the device. For instance, tick "Source 7".

Step 3. Click "Sure save".

Note:

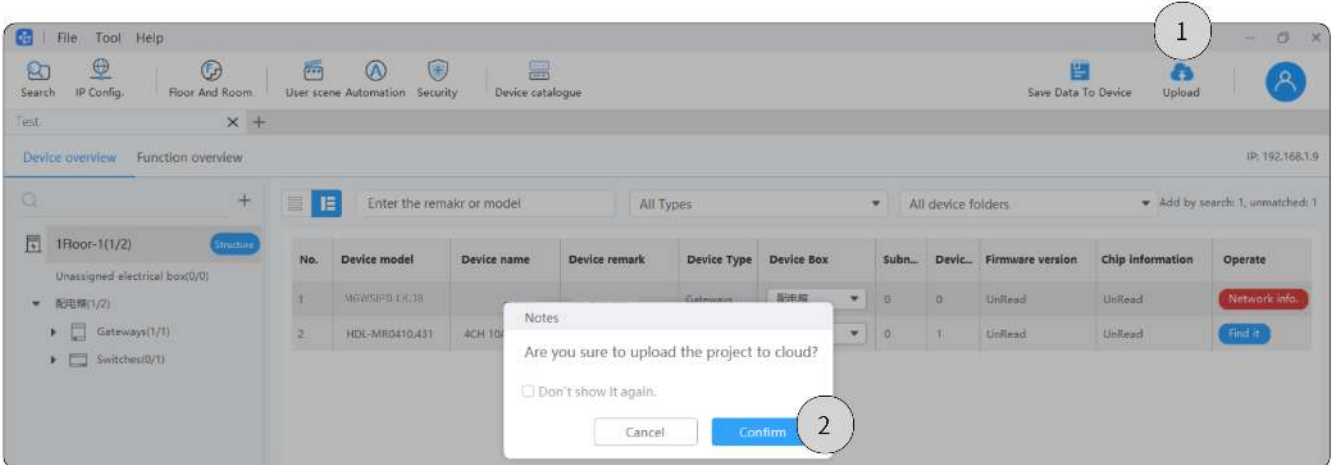
- If the device data have been re-set but not saved, please note to proceed the steps above to restore the data.
- **Batch read:** The operation above will overwrite the device data. So, to restore the original settings, please note to click "Batch read" before proceeding further configuration.



10.Upbad Project

Step 1.In the page of current project,click "Upbad".

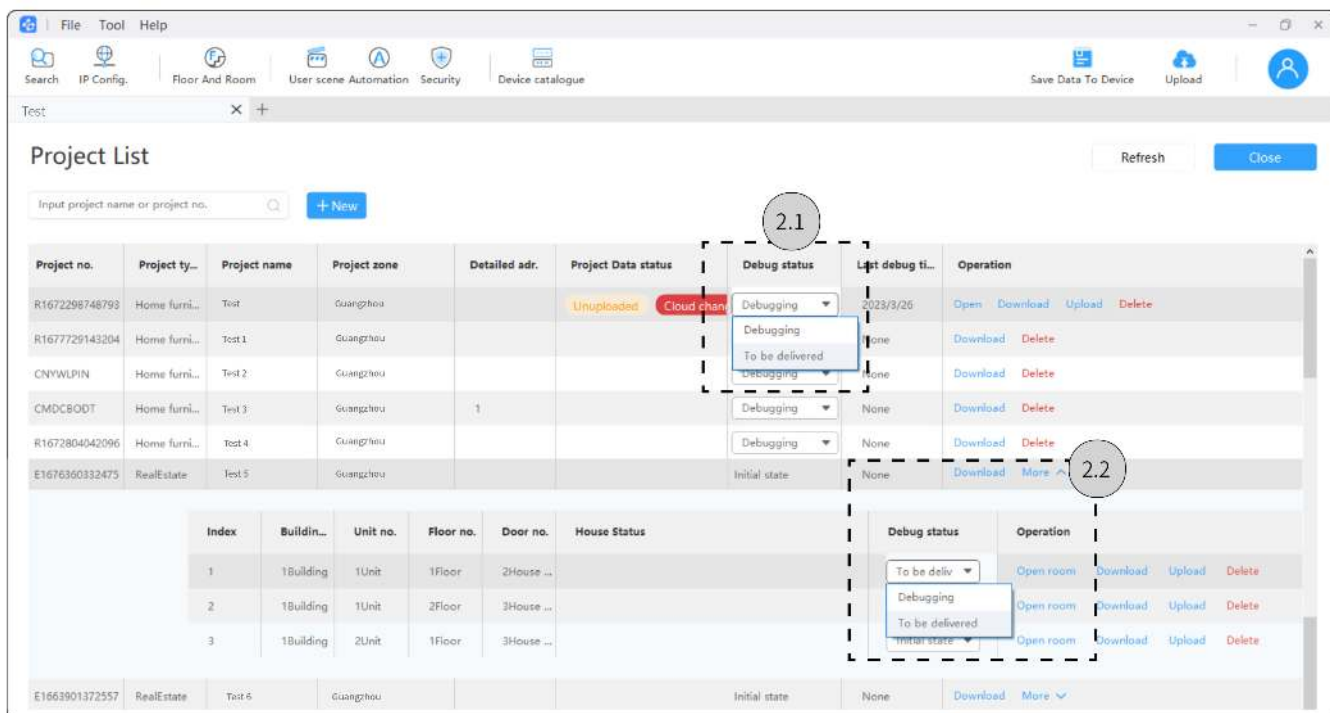
Step 2.Click "Confirm".



2.1.For the home or public project,please check the upbad status from the column "Projectdata status".

2.2.For the real estate or hotel project,please click "More" and unfold the house list, then check the upbad status from the column "House status".

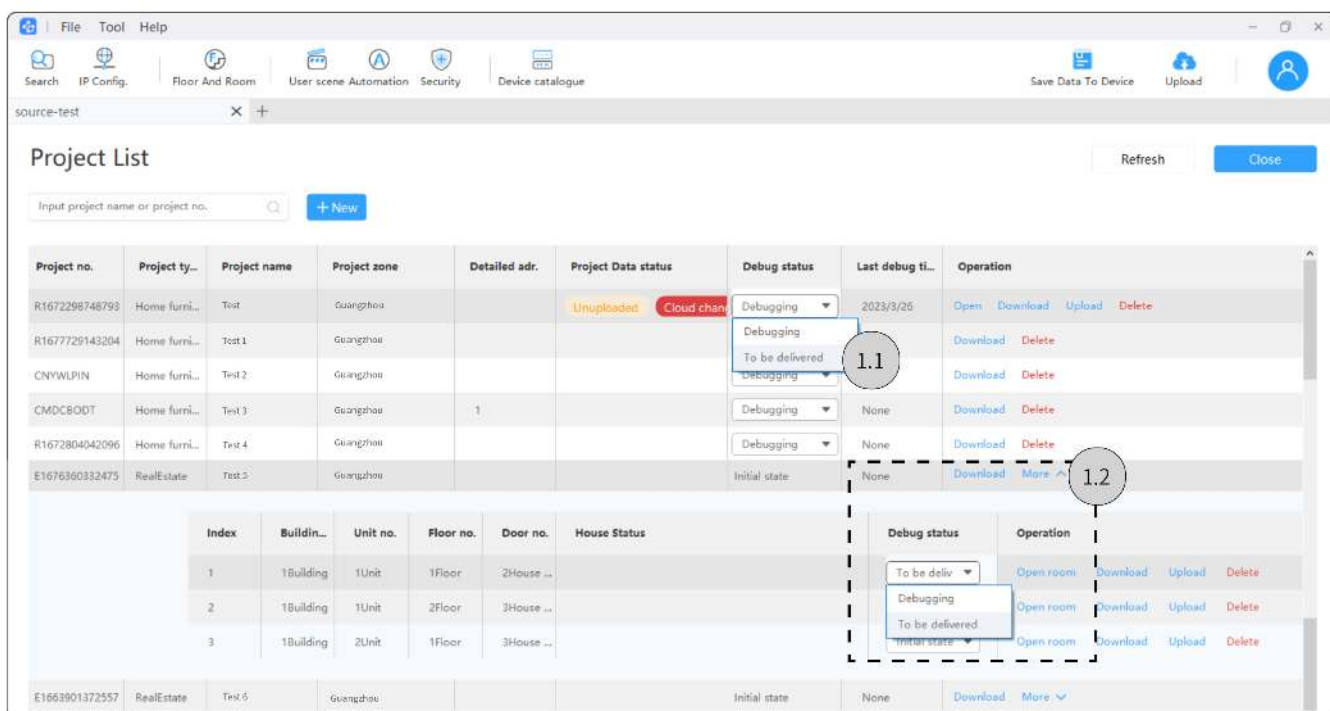
Note: Here it only shows the houses authorized for current users to debug.



11. Complete Debugging

1.1. For the home or public project, please select "To be delivered" from the column 'Debug status'.

1.2. For the real estate or hotel project, please click 'More' and unfold the house list, then select "To be delivered" from the column 'Debug status'.



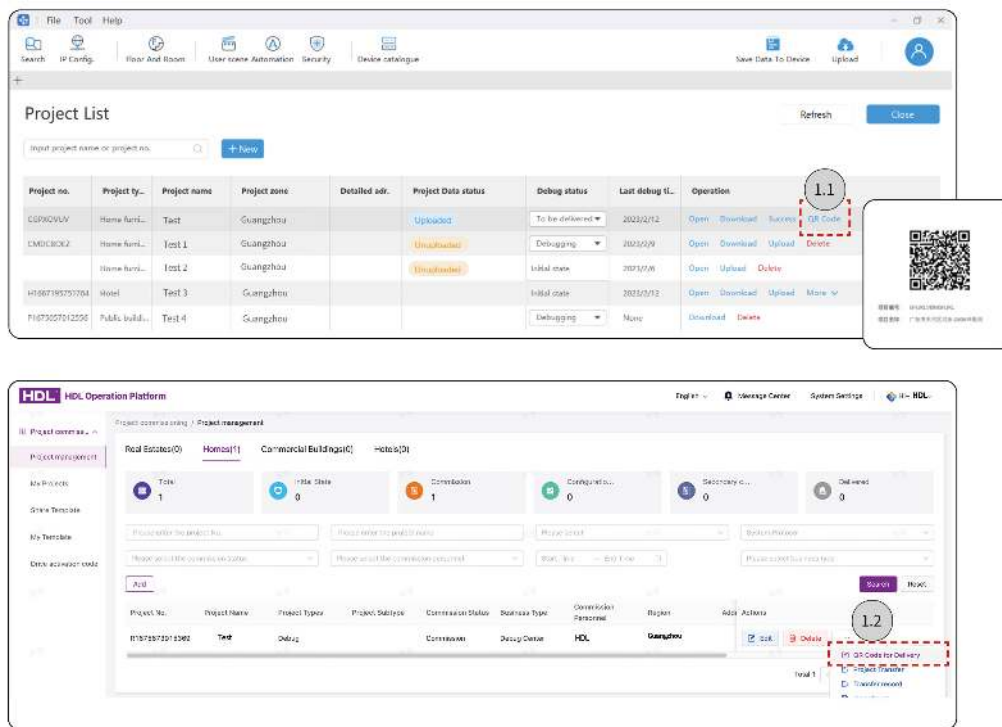
12. Deliver Project

Step 1. Make sure that the project has been set as "To be delivered" (see Section 11), then proceed Step 1.1 or Step 1.2 to deliver project.

Step 1.1. Click 'QR Code' and save to local.

Step 1.2. Log into HDL A IoT to check and save QR code.

Step 2. Once the end users scan the code via On Pro APP, the project delivery is complete.



13. Secondary Configuration

Regarding those delivered projects, if users need further configuration or modification, please firstly authorize the debugging privilege through On Pro APP, then go back to the commissioning software to proceed with secondary configuration, as described below.

Step 1. Log into On Pro APP, click "Individual".

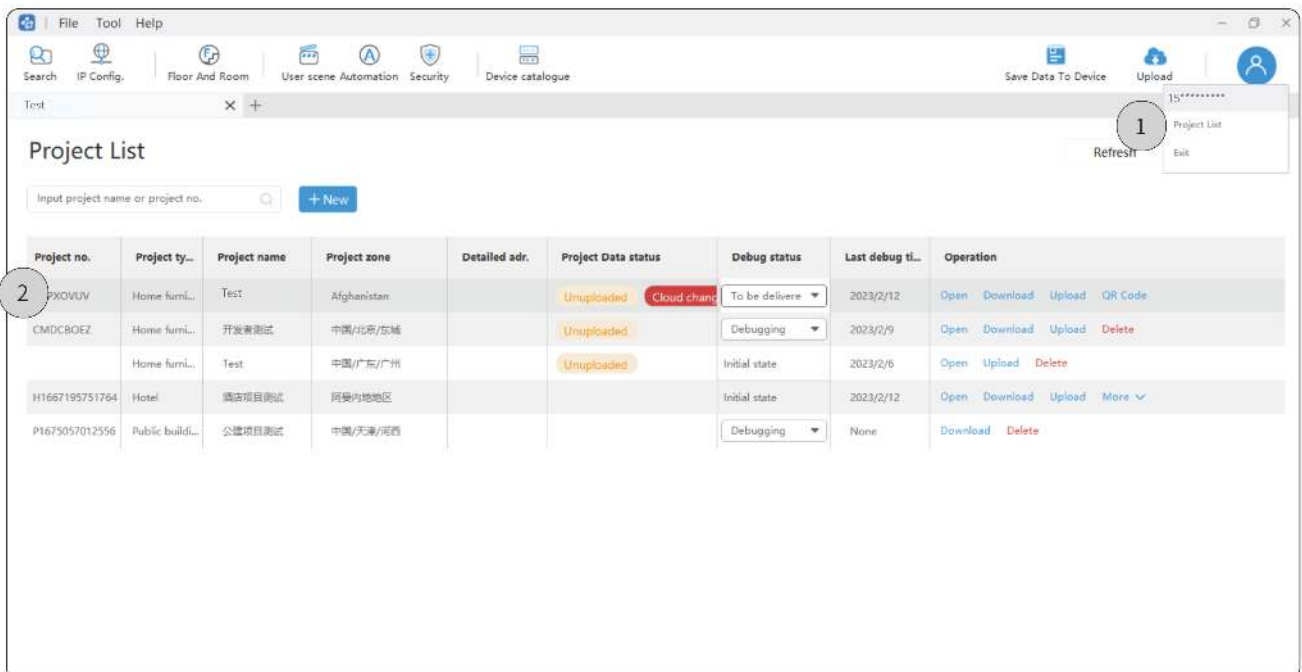
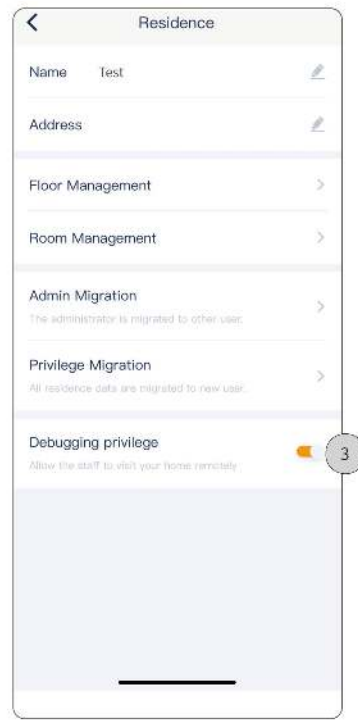
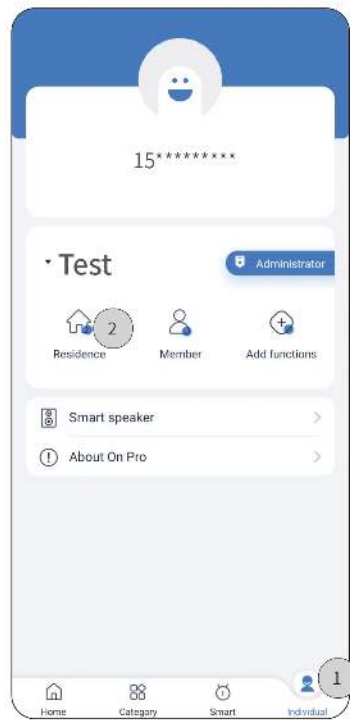
Step 2. Click "Residence".

Step 3. Activate "Debugging privilege".

Step 4. Log into HDL Studio, click the icon for personnel center to select "Project List".

Step 5. Double click the project.

Note: If the project has not been downloaded, please click "Download" then open it.



• On ProAPP

1. Log into On Pro APP

Step 1. Input Account & Password. --> Step 2. Click "Agree".

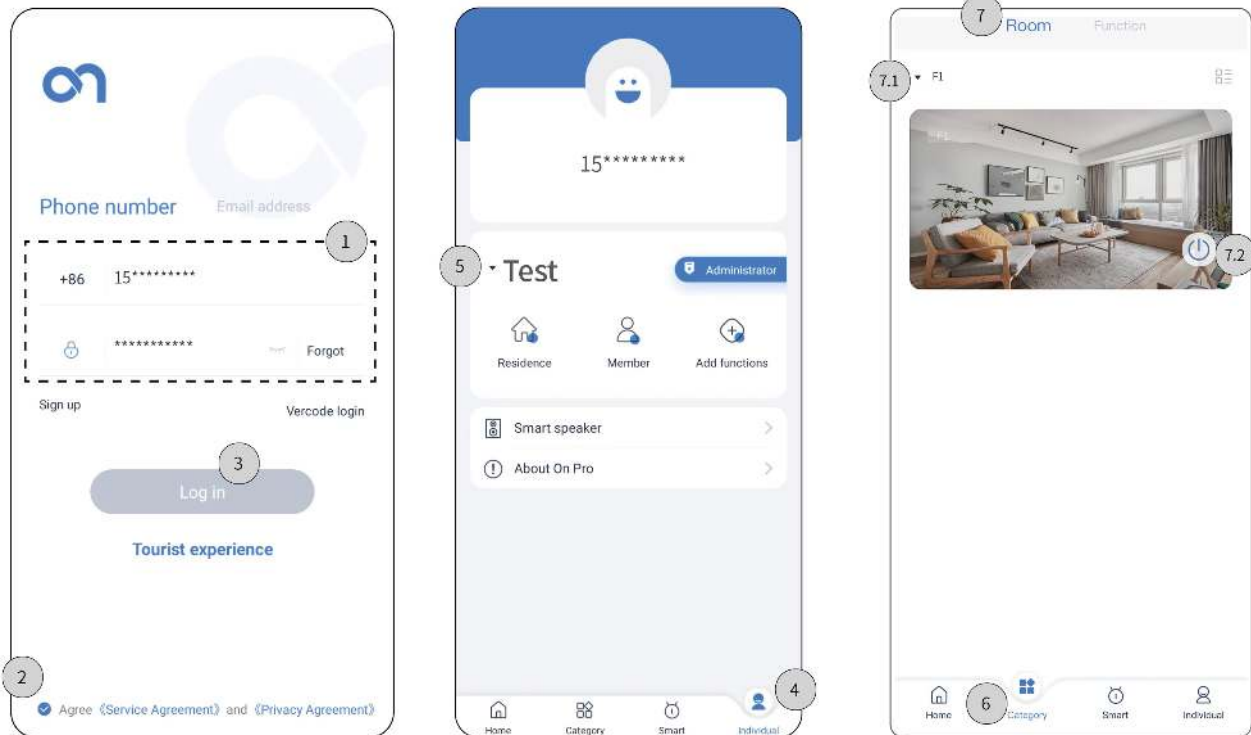
Step 3. Click "Log in". --> Step 4. Click "Individual".

Step 5. Select project. For instance, select "Test". --> Step 6. Click "Category".

Step 7.C lick 'Room ', here it shows all area bound with the current project, which have been already set by HDL Studio or Studio APP.

Step 7.1.D rag down to select area.

Step 7.2.C lick to turn on/off all devices in the area.



2. Test

2.1. Function Test

Step 1.C lick 'C ategory'.

Step 2.C lick 'Function ', here it shows all function bound with the current project, which have been already set by HDL Studio or Studio APP.

Step 3.C lick the tab to enter the setting page. For instance, click "Light". --> Step 3.1.C lick to turn on/off this type of devices all at once.

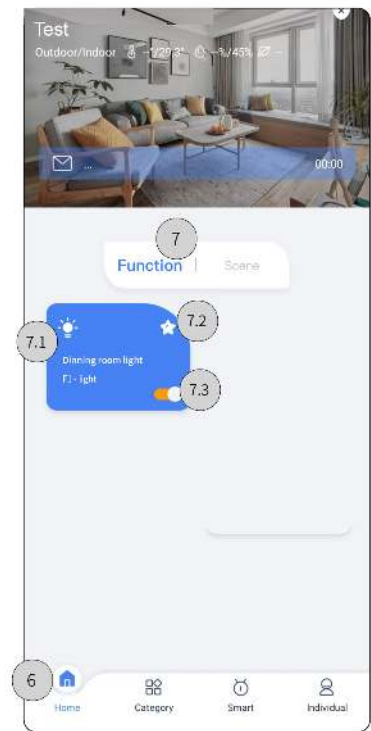
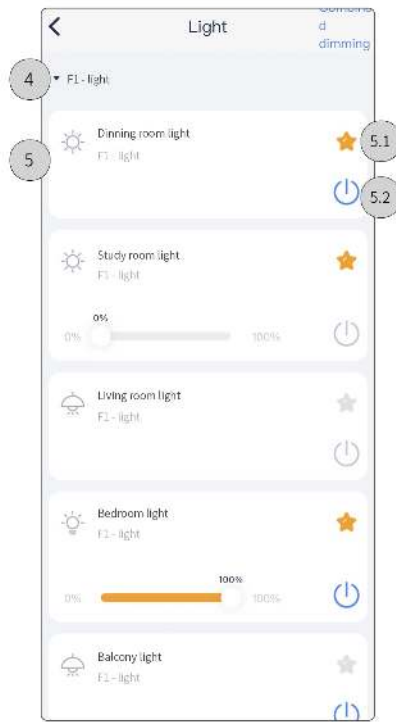
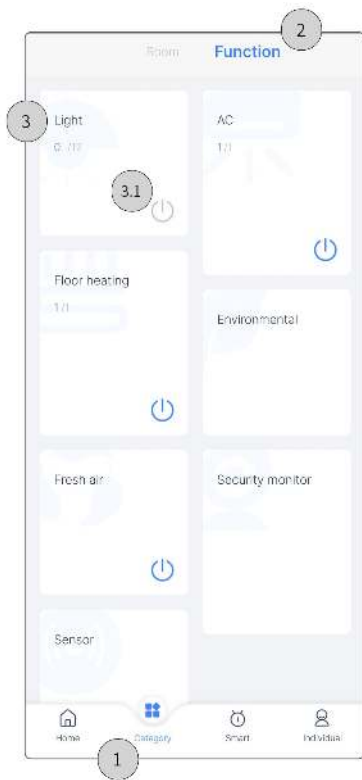
Step 4.D rag down to select area. --> Step 5.C lick the tab to enter the device setting page. For example, click 'Dinning room light'.

Step 5.1.C lick to set as favorites. --> Step 5.2.C lick to turn on/off.

Step 6.C lick 'H ome'. --> Step 7.C lick 'Function ', here it shows the function you set as favorites.

Step 7.1.C lick the tab to enter the setting page of the device.

Step 7.2.C lick to cancel favorites. --> Step 7.3.C lick to turn on/off.



2.2.Scene Test

Step 1.C lick "Smart".

Step 2.C lick "Scene",here it shows all scenes bound with the current project,which have been already set by HDL Studio or Studio APP.

Step 3.D rag down to select area.

Step 3.1.C lick the tab to enter the scene setting page. --> Step 3.2.C lick to set as favorites.

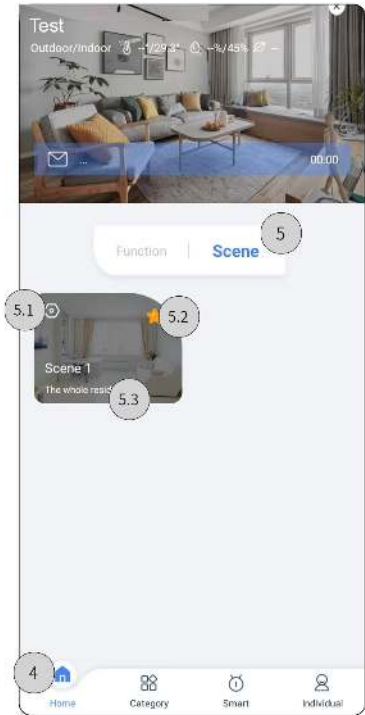
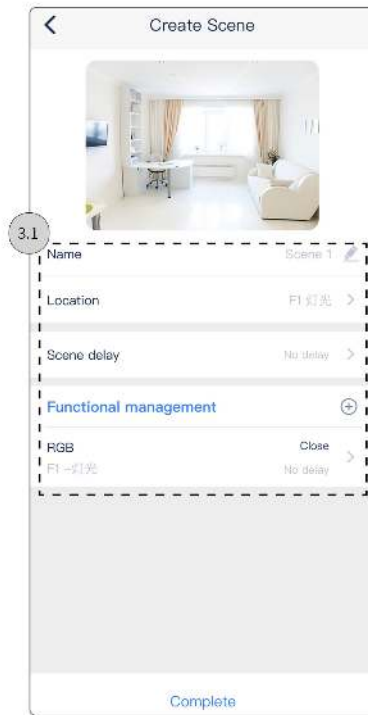
Step 3.3.C lick to turn on/off.

Step 4.C lick "Home".

Step 5.C lick "Scene",here it shows the scenes you set as favorites.

Step 5.1.C lick the tab to enter the setting page of the scene. --> Step 5.2.C lick to cancel favorites.

Step 5.3.C lick to turn on/off.



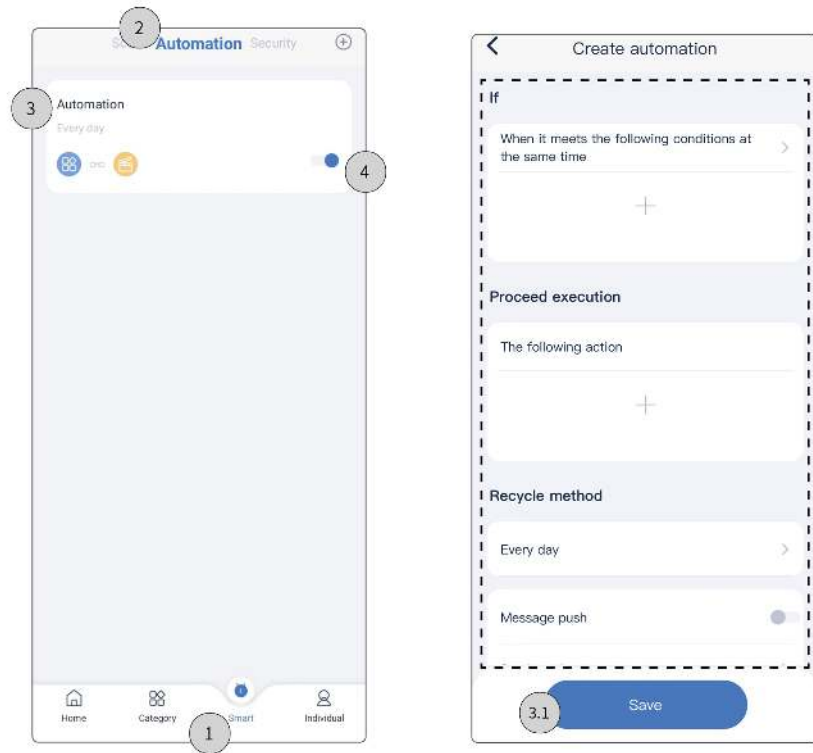
2.3.Automation Test

Step 1. Click "Smart".

Step 2. Click "Automation", here it shows all automation bound with the current project, which have been already set by HDL Studio or Studio APP.

Step 3. Click the tab to enter the automation setting page --> Step 3.1. Proceed automation setting, then click "Save".

Step 4. Click to enable/disable the automation.



3. Synchronize data to Source 7

Tips: After debugging and testing, to synchronize the project data to Source 7, please refer to the following steps.

Note: Power on Source 7 at first. Make sure the mobile phone and Source 7 be connected with the same LAN.

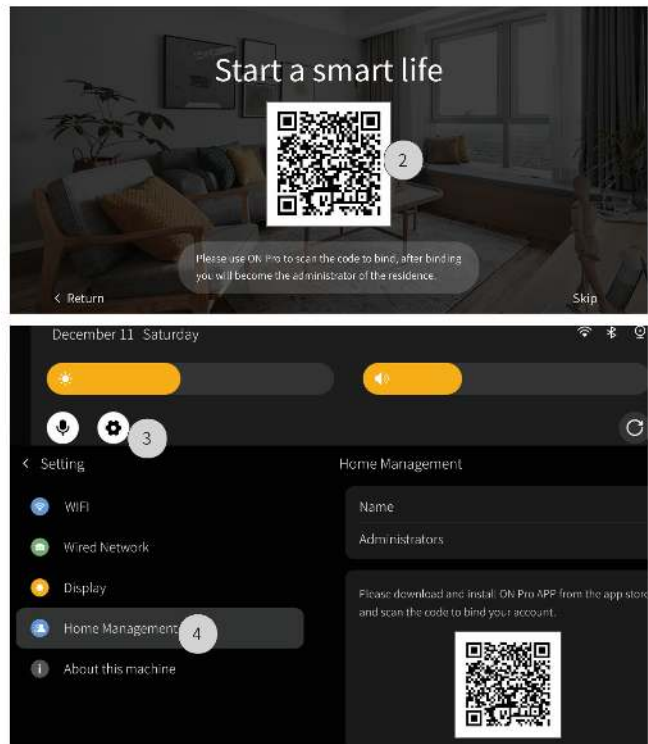
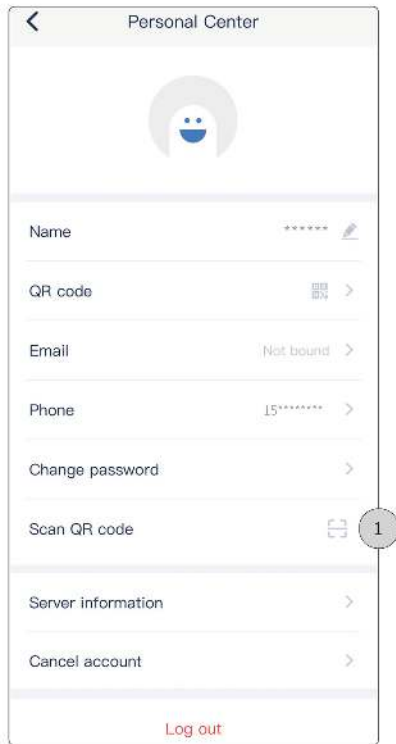
Step 1. Go to On Pro APP - 'Personnel Center', click 'Scan QR code'.

Step 2. Start-up Source 7. For the first time binding, users can get the account QR code from the start-up page.

While for re-binding, please refer to next step.

Step 3. Swipe down the top tab to click the setting icon.

Step 4. Click 'Home Management' to get the account QR code.



□ □ Packing List

- Source 7*1
- Bracket*1
- QR code card*1

Note: After unpacking, please check if the product and the parts are complete.

□ □ Legal Statement

HDL has all the intellectual property rights to this document and contents thereof. Reproduction or distribution for third parties are prohibited without written authorization from HDL. Any infringement of HDL's intellectual property rights will be investigated the legal liability.

The contents of this document will be updated as the updates of product versions or other reasons. Unless otherwise agreed upon, this document is to be used as a guidance only. All the statements, information and recommendations in this document makes no warranty expressed or implied.

2023 HDL Automation Co., Ltd. All rights reserved.

□ □ Troubleshooting

E-mail: hdltickets@hdlautomation.com

Website: <https://www.hdautomation.com>

□ □ TechnicalSupport

Email: hd.tickets@hdautomation.com

Website: <https://www.hdautomation.com>