

# Tile Series Smart Door Bell 2.1

## Datasheet



MPDT-1B-BP.18



Please scan the QR code above to check the latest version of datasheet!

Before using this product, please read this datasheet carefully and keep it properly!

Document Version: C

---

## ◆◆ Overview

Tile Series Smart Door Bell 2.1 (hereinafter referred to as the “product” or “device”) is a door bell panel which is installed outside the room by the door. It can be controlled through the button panel or other devices to display the user's requirements, such as DND, Please Wait and Clear Up Room. Custom settings can be made through HDL Studio software to meet different user needs. (Tile Series Smart Door Bell 2.1 includes both plastic and metal versions.)

Key functions:

- It can be linked to hotel room control units for intelligent device control.
- The doorbell button is a mechanical button with an LED indicator, and the brightness can be set on HDL Studio software.
- Support multi-gang installation with Tile series 2.1, maintaining consistent exterior design style;
- Support customized laser engraving of doorbell button icons.

## ◆◆ Appearance

Laser engraving icons: Do Not Disturb, Please Wait, Clear Up Room, Doorbell

- Note:**
1. Due to the different icon styles required for different hotel projects, the factory standard only defaults to laser engraved doorbell icons.
  2. For Do Not Disturb, Please Wait and Clear Up Room icons, customers need to make a note and provide laser engraving files when placing an order.

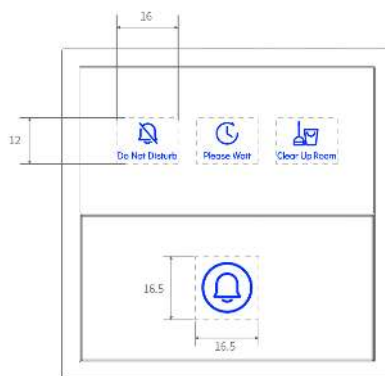


Figure 1

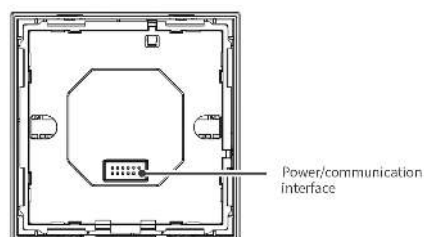


Figure 2

## ◆◆ Technical Data

Item	Parameter
Rated voltage	24V DC
Rated current	12mA/24V DC
Communication protocol	HDL Buspro
Cable diameter of Buspro terminal	0.6-0.8mm
Working temperature	-5°C~45°C
Working relative humidity	≤90%RH, non-condensed
Storage temperature	-20°C~60°C
Storage relative humidity	≤93%

## ◆◆ Specifications

Item	Parameter
Dimensions (W X H X D)	86×86×10.5(mm)
Net weight	PC: 49g; Metal: 52g
Housing material	PC/Aluminum alloy
Installation	Wall box
IP degree (compliant with EN 60529)	IP20

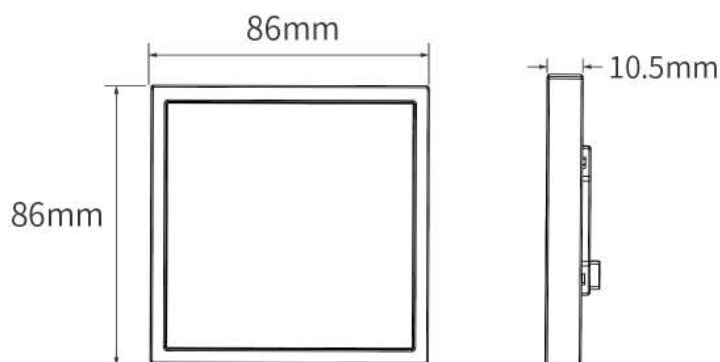


Figure 3

## ◆◆ Safety Precaution

Please do not privately disassemble or replace any parts of the product. Otherwise, it may cause mechanical fault, electric shock, fire or personal injuries.

Warning:

- Installation and commissioning of this equipment must be carried out by us or by an organization appointed by us. The planning and construction of the electrical connection of this equipment must comply with the relevant local safety standards and regulations.
- Any consequences caused by failure to install and wire according to this instruction are not related to our company.
- Please refer all maintenance work to our after-sales department or designated organization, the warranty of this product does not apply to the failure caused by the user's disassembly of the product.

Caution:

- Before performing any installation or disassembly procedures, any maintenance or cleaning procedures on the device, it is crucial to disconnect the device from all voltage sources. This step is necessary to ensure the safety of the technician and prevent any potential damage to the device.
- It is a MUST to install the device with wall box.
- To protect this device and loads, it is recommended that a 10A circuit breaker be connected to each circuit.
- Do not use corrosive liquid to wipe the device body, especially the interface, so to avoid damage to the device.
- Prior to performing maintenance or cleaning on the device, disconnect the device from all voltage sources, to avoid electric leakage and electric shock.

## ◆◆ Wiring

- The device can be used with Buspro Panel Power Interface EU and Buspro Panel Power Interface.
- For Buspro connection, a hand-in-hand connection is recommended. Please wire according to HDL standards: D+, D-, GND and +24V.

Buspro Panel Power Interface EU wiring:

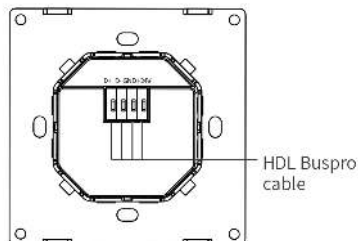


Figure 4

## ◆◆ Installation

- **Warning:** Before installation, please cut off the power supply, it is strictly prohibited to operate with electricity.

**Step 1.** Install the wall box (the depth of wall box should not be less than 45mm) on the wall and lead out Buspro cable. Connect the cables, and pay attention to safe and reliable wiring.

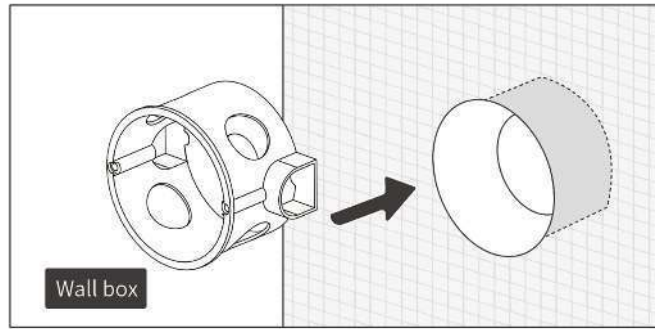


Figure 5

**Step 2.** Insert the power interface into the bracket.

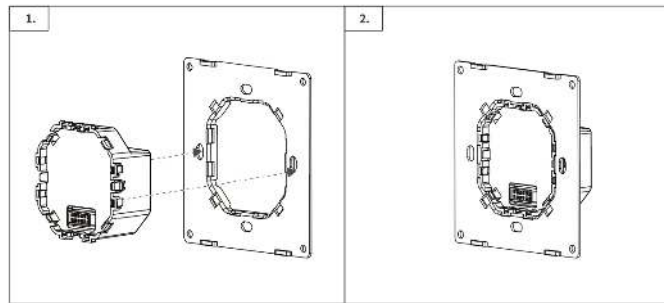


Figure 6

**Step 3.** Aim the screws on both sides of the interface at the holes in the wall box, install them together and lock the screws;

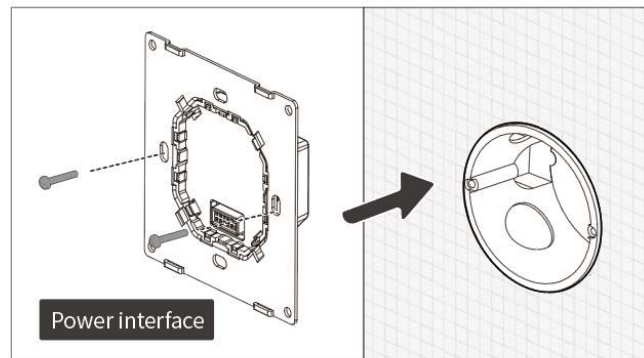


Figure 7

**Step 4.** Assemble the panel onto the bracket.

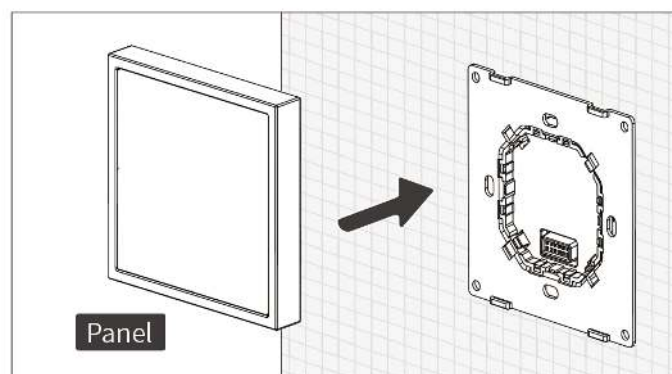
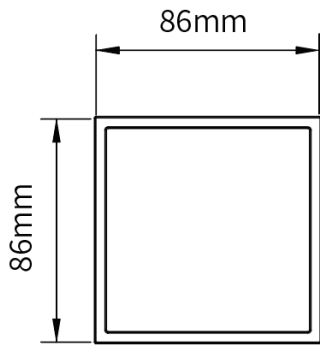


Figure 8

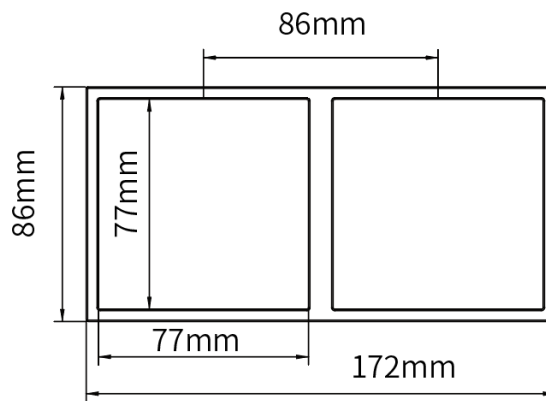
**Multi-gang installation:**

- Supports horizontal and vertical installation;
- Horizontal installation supports up to 4 rows;
- Vertical installation supports up to 4 columns.

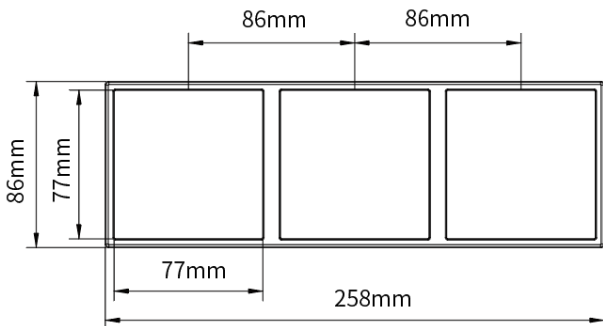
Frame type	Installation direction	Gang number	Size
PC	Horizontal/Vertical	1	86*86*10.5(mm)
		2	172*86*10.5(mm)
		3	258*86*10.5(mm)
		4	344*86*10.5(mm)
Metal	Horizontal/Vertical	1	86*86*10.5(mm)
		2	172*86*10.5(mm)
		3	258*86*10.5(mm)
		4	344*86*10.5(mm)



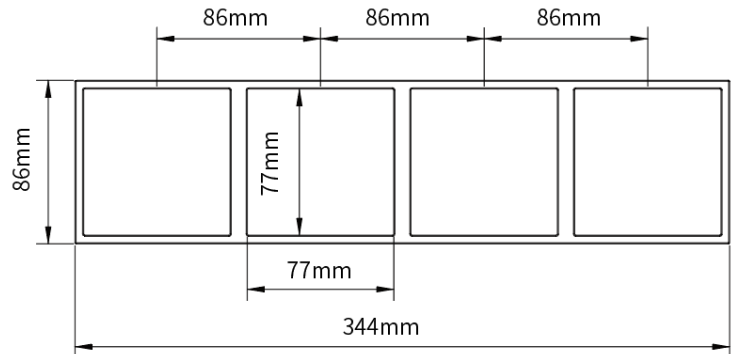
Single-gang frame



Two-gang frame



Three-gang frame



Four-gang frame

Warning: Before performing any disassembly procedures on the device, it is crucial to disconnect the device from all voltage sources. This step is necessary to ensure the safety of the technician and prevent any potential damage to the device.

Step 1. It is recommended to use a screwdriver to pry the panel open from the bottom.

Step 2. To remove the panel and power base, please refer to the section Installation and do it reversely.

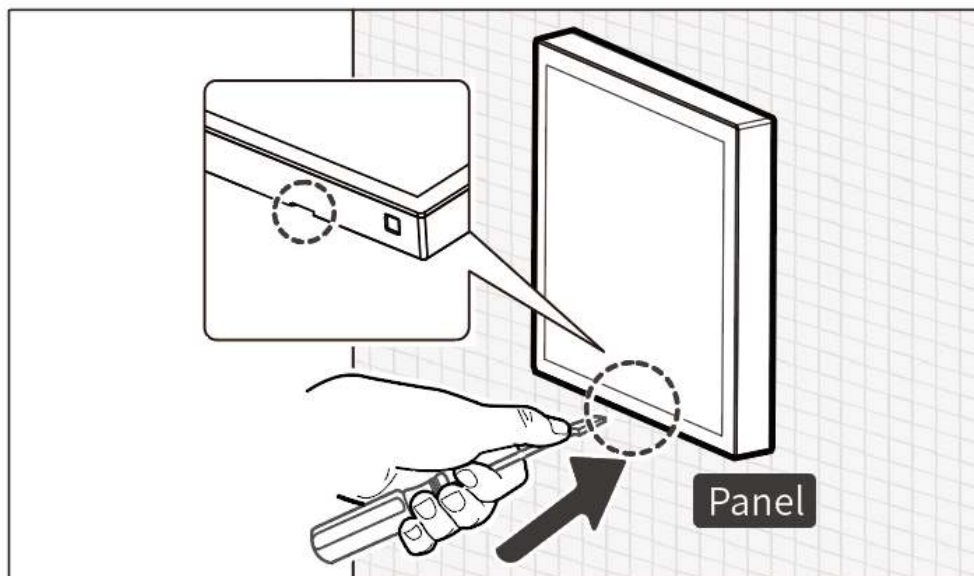


Figure 9

## ◆◆ Operation

Doorbell function settings: supports doorbell icon display and button logic settings on HDL Studio software (please refer to the commissioning instructions for details)

## ◆◆ Packing List

- Tile Series Smart Door Bell 2.1\*1

## ◆◆ Copyright Statement

HDL has all the intellectual property rights to this document and contents thereof. Reproduction or distribution for third parties are prohibited without written authorization from HDL. Any infringement of HDL's intellectual property rights will be investigated the legal liability.

The contents of this document will be updated as the updates of product versions or other reasons. Unless otherwise agreed upon, this document is to be used as a guidance only. All the statements, information and recommendations in this document makes no warranty expressed or implied.

## Update History:

The form below contains the information of every update. The latest version contains all the updates of all former versions.

Version	Update Information	Date
V1.0	Initial release	January 24, 2025

## ◆◆ Technical Support

E-mail: [hdltickets@hdlautomation.com](mailto:hdltickets@hdlautomation.com)

Website: <https://www.hdlautomation.com>